

Entrepreneurs, Legal Institutions and Firm Dynamics

Neus Herranz

Stefan Krasa

Anne P. Villamil*

May 6, 2009

Abstract

This paper assesses quantitatively the impact of legal institutions on entrepreneurial firm dynamics in a model with credit constraints and endogenous default, where entrepreneurs may differ in their willingness to bear risk. The paper shows: (i) Firm legal rules, credit constraints and default interact to generate significant welfare effects. Less risk averse entrepreneurs run bigger firms and it is optimal for them to incorporate. More risk averse entrepreneurs run smaller firms and generally are better off remaining unincorporated. (ii) Owners choose firm size, financial structure and default to manage firm risk, leading to interesting firm dynamics. More risk-averse owners tend to default more often than the less risk averse, though they carry less debt. (iii) Credit constraints bind for many but not all entrepreneurs. (iv) The model estimates modest differences in owner risk aversion, consistent with micro studies.

JEL Classification Numbers: D92, E01, G33, G38, L25, L26

Keywords: Entrepreneur; Legal Environment; Incorporated; Unincorporated; Endogenous Default; Credit Constraints; Financial Structure; Commitment; Risk Aversion; Heterogeneity; SSBF

*Address of the Authors: Department of Economics, University of Illinois, 1206 South 6th Street, Champaign, IL 61820 USA

E-mails: mherranz@uiuc.edu, skrasa@uiuc.edu, avillami@uiuc.edu.

We thank Marco Cagetti, Cristina De Nardi, George Deltas, Tim Kehoe, Makoto Nakajima, Stephen Parente, Vincenzo Quadrini, Jamsheed Shorish and Michele Tertilt. We also thank seminar participants at Cambridge, Oxford, University of London, Conference on Bankruptcy at the IHS in Vienna, Conference on GE at Warwick University and the SAET Conference. We gratefully acknowledge financial support from National Science Foundation grant SES-031839, NCSA computation grant SES050001, the Center for Private Equity Research at the University of Illinois and Kauffman Foundation grant 20061258. Any opinions, findings, and conclusions or recommendations expressed in this paper are those of the authors and do not necessarily reflect the views of the National Science Foundation or any other organization.

1 Introduction

Entrepreneurs' decisions about firm legal organization, size, capital structure and bankruptcy are crucial determinants of firm dynamics. The importance of the link between entrepreneurship and the legal environment is well explained by a quote from a successful entrepreneur, Pat Sullivan, to his wife when they discussed whether or not to take the risk of starting a new business: "*In Texas they can't take your house away, they can't take your last car and they can't take your kids.*" After realizing that the law would limit their personal loss, they decided to start a firm.¹ Our goal is to assess formally and quantitatively the importance of the legal environment on firm dynamics. Historically, the fundamental role of corporate law was to limit personal liability for business debts, see Hovenkamp (1991), pp. 49-55. Supporters of the U.S. Bankruptcy Act of 1800 argued that "unforeseen accidents" were ruining respectable merchants and there was substantial social value in returning these merchants to active business, see Mann (2003), note 11, pp. 57 and 73. Yet roughly half of all U.S. entrepreneurs are unincorporated, exposing them to substantial personal risk, see Herranz, Krasa, and Villamil (2009). Our paper constructs a model of firm dynamics which explains why both types of firms, incorporated and unincorporated, are optimal and may co-exist.

We show that bankruptcy insures incorporated owners against poor firm returns but permits upside gains, even after accounting for the impact of default on loan interest rates. The legal system affects firm dynamics, inducing entrepreneurs that are more willing to bear risk to operate larger firms with modest default rates, which leads to higher output and welfare.² More risk averse agents may not run firms, but if they do they will tend to be small with lower future value. We show that it may be optimal for such owners to leave personal assets at risk in bankruptcy by remaining unincorporated because this allows them to credibly commit to refrain from "excessive" default. Attitudes toward risk are crucial (e.g., the same bankruptcy rule will have different implications for owners with different degrees of risk aversion), thus we allow for heterogeneity and use the model to derive a distribution of owner risk aversion. Apart from bankruptcy, entrepreneurs can also manage firm risk by varying financial structure, firm size and the amount of personal net-worth invested. We characterize firm dynamics along these dimensions as well.

We link our model to the Survey of Small Business Finances (SSBF) to assess its quantitative

¹In 1986 Pat Sullivan founded Contact Software International (CSI), a software firm that developed a program to help salespeople manage client records. In 1993 CSI was bought by Symantec Corporation for \$45 million, and Sullivan was named Entrepreneur of the year by Inc. magazine. Sullivan often tells this story in business seminars.

²The option value of maintaining the firm to realize future value limits default. Owners will "bail out" a firm today with personal funds if they expect sufficient future returns – this is a firm's option value.

implications, identifying entrepreneurs as owners of small firms since they typically also manage their firm (in contrast to large firms). The SSBF data set contains the detailed information on firms and owners necessary to understand closely held entrepreneurial firms, in which business and personal assets are often co-mingled, see Herranz, Krasa, and Villamil (2009). Such firms are a vital part of the macroeconomy, producing more than 50 percent of non-farm private U.S. GDP, employing half of all private sector employees and paying 45 percent of total private payroll. These firms are a source of “good jobs,” generating 60 to 80 percent of net new jobs annually over the last decade, employing 41 percent of high tech workers (scientists, engineers and computer workers) and producing almost 14 times more patents per employee than larger patenting firms. Among all U.S. employer firms, 89 percent have less than 20 employees.³

We construct a model with a risk neutral representative lender and many long-lived agents who may differ in their willingness to bear risk. Each period, agents choose consumption and whether to run a firm with uncertain returns. If they run a firm, they choose its size, capital structure (mix of personal funds and outside loans), and whether to default ex-post.⁴ Risk cannot be diversified because owners run a single firm, not a portfolio of firms, and firms may be credit constrained. Default occurs in equilibrium, with the lender recovering only a fraction of the loan and the firm unable to obtain credit for several periods. Firms weigh the effect of default today against access to future credit, given bankruptcy rules. Accounting for heterogeneous risk aversion and uncertain firm returns requires us to derive cumulative probability distribution functions for firm decisions. We compare model predictions to distributions constructed from data. The discipline imposed by this check for consistency between model predictions and data is the analog of matching moments in quantitative macroeconomic models, see Prescott (2006).

The paper has four main results: First, modest differences in willingness to bear risk interact with firm legal rules and credit constraints to generate significant welfare effects. Less risk-averse entrepreneurs run larger firms with higher future value and this limits their incentive to default, hence they incorporate to protect personal assets. In contrast, if the more risk averse entrepreneurs run firms they are small with lower future value. Such owners may optimally leave some personal assets at risk in bankruptcy by remaining unincorporated because this credibly limits their default ex post. Second, we characterize firm dynamics with respect to size, financial structure and default,

³See <http://www.sba.gov/advo/stats/sbfaq.pdf>. In the 1993 and 1998 SSBF, the median number of employees is 7 and median assets are \$270,000.

⁴Models with representative agents are aggregated by multiplying the optimal decision rules from the individual’s problem by the number of (identical) agents. This is not possible in our setting because differences in willingness to bear risk (i.e., heterogeneous risk aversion parameters) are central to the debate on entrepreneurship. As in Krusell and Smith (1998), we construct distributions to account for heterogeneity.

and show how these endogenous choices are used to manage firm risk. Overall and surprisingly, we find that more risk-averse owners tend to default more often than the less risk averse, though they carry less debt.⁵ Third, we find that credit constraints bind for many but not all entrepreneurs.⁶ Fourth, we use the model to estimate owner willingness to bear risk and find modest differences, consistent with micro studies. The finding that changes in legal rules and credit constraints can have vastly different impacts on agents with only small differences in risk aversion shows that agent heterogeneity and the legal environment are important for policy analysis.

Our analysis requires technical innovation and high performance computing. The ex-post default decision introduces a non-convexity (described below), heterogeneity requires distributions, and the return distribution cannot be captured by the first two moments or a few states. We prove that when an agent's value function is scalable in net worth, complexity is reduced. The problem is computationally intensive because non-convex optimization requires care to find an appropriate start value. Also, constructing distributions for firm size, capital structure and personal net worth invested in the firm requires the fixed point problem to be computed for a sufficiently large number of risk-aversion values to account for agent heterogeneity.⁷ Although calibration exercises can typically use small discrete approximations of uncertainty and match moments, we cannot approximate the return distribution by a few states without introducing large errors because, as we show in section 7.5, the non-normal shape of the distribution matters, particularly the thick tails. Thus, given continuation values, when computing an agent's utility maximization problem we must use numerical integration in every step of the optimization.

Our paper is related to a large literature on entrepreneurship.⁸ For example, Kihlstrom and Laffont (1979) focus on differences in risk aversion and formalize ideas in Knight (1921). Our result that firms of less risk averse owners with a bankruptcy option tend to be large and have high future value, which credibly limits their incentive to default, is related to Hopenhayn and Vereshchagina (2008)'s model of occupational choice with homogeneous risk preferences. Risk reduces utility, which discourages entrepreneurship, but losses are limited due to the default option and gains are unbounded if the firm is successful. As in our model, this introduces a kink in the

⁵As in Chatterjee, Corbae, Nakajima, and Rios-Rull (2007), default occurs in equilibrium in our model. This differs from models in which default does not occur in equilibrium, e.g., Kehoe and Levine (1993).

⁶Although initial net-worth and the return distribution are identical across firms ex-ante, net-worth and consumption evolve differently over time due to differences in risk aversion and return realizations.

⁷The distribution of risk aversion is constructed by repeatedly computing the distribution of net-worth invested for different distributions of risk-aversion to minimize the distance to the empirical cdf.

⁸See Quadri (2009) for an excellent survey of recent macroeconomic theories of entrepreneurship, distinguishing three types of studies: What factors affect the decision to become an entrepreneur? What are the aggregate and distributional implications of entrepreneurship for savings and investment? How does entrepreneurship affect economic development and growth?

objective function, which encouraging risk-taking. However, in Hopenhayn and Vereshchagina (2008) risky projects provide lotteries over future wealth. We cannot use lotteries to convexify the objective function due to a commitment problem – firm size and capital structure decisions are made ex ante but the default decision is made ex post, and there is no way to “force” firms to honor an ex-ante promise to refrain from bankruptcy ex-post.⁹

Our paper also complements recent analyses of the quantitative effects of consumer bankruptcy rules in dynamic models with limited commitment and incomplete markets begun in Athreya (2002). Chatterjee, Corbae, Nakajima, and Rios-Rull (2007) and Livshits, MacGee, and Tertilt (2007) show that consumer bankruptcy provides partial insurance against bad luck due to health, job, divorce or family shocks, but it drives up interest rates, which impedes intertemporal smoothing. In the latter paper the insurance effect generally dominates the interest rate effect for U.S. consumers and the former finds the reverse, but both find modest net welfare effects. Meh and Terajima (2008) extend the model to study the effect of consumer bankruptcy on unincorporated entrepreneurs and find larger welfare gains from eliminating the personal bankruptcy exemption but losses from eliminating consumer bankruptcy entirely. In contrast, our baseline model focuses on bankruptcy by incorporated firms with heterogeneity in owner willingness to bear risk. Bankruptcy provides insurance against poor firm returns, but default is tempered by potentially high future gains due to kurtosis in firm returns. We find welfare effects of bankruptcy reform that are much greater than in consumer studies, especially for those most willing to bear risk.¹⁰ We also show that less risk-averse owners incorporate, while more risk-averse owners may remain unincorporated.¹¹

The paper proceeds as follows. Section 2 contains the model. Section 3 uses theory to derive a computable problem and constructs distributions predicted by the model. The model is mapped into U.S. data in Section 4. Section 5 shows that the model is quantitatively plausible along a number of dimensions, including firm size, capital structure and default rates. Section 6 examines firm legal status (incorporation). Section 7 reports policy experiments. Section 8 concludes.

⁹Abbring and Campbell (2005) formulate and estimate a model of firm dynamics and also find that a large component of firm value is due to the option to exit. They focus on differences in firm size due to heterogeneity across entrepreneurs’ skills rather than differences in risk aversion.

¹⁰The insurance effect is more important than the interest rate effect.

¹¹The less risk-averse run larger firms, default less and use personal funds to “bail out” their firms. More risk-averse owners have a commitment problem, which the seizure of personal assets in bankruptcy mitigates.

2 Model with Incorporated Firms

The economy has $t = 0, 1, \dots$ time periods, with a risk-neutral competitive lender and many infinitely lived agents. Agents' have a common discount rate β and preferences that are heterogeneous with respect to risk aversion parameter $\rho \sim N(\mu, \sigma^2)$. We assume that the lender: has an elastic supply of funds;¹² makes one-period loans (the average maturity on loans to small firms is less than one year in the Federal Reserve's *Survey of Terms of Business Lending*);¹³ and can infer borrower risk aversion ρ .

Given ρ , each agent's CRRA utility function over consumption is given by

$$u(c) = \frac{c^{1-\rho}}{1-\rho}.$$

Agents have an initial endowment w_0 and access to an ex-ante identical constant returns to scale technology. If operated, the technology produces output x per unit of assets invested A . The firm's return is given by random variable X with cumulative distribution function $F(x)$ and probability density function $f(x)$, which is strictly positive on support $[\underline{x}, \bar{x}]$, $\underline{x} \leq 0$, $\bar{x} > 0$ and iid. The firm's output is then Ax . A negative realization means that firm losses in a year exceed its current assets; the owner must either use personal funds to stay solvent or default. Net-worth w_t is derived from the return on investment in all periods $t \geq 1$, known at the beginning of the period.¹⁴ Agents also have access to an outside investment opportunity with return r .

Entrepreneurs are agents who choose to operate a firm, which means $A > 0$; agents who do not set $A = 0$. Entrepreneurs raise assets to invest in their firm at time t in two ways:

Equity: Use personal net-worth w_t to self-finance at real opportunity cost r .

Debt: Take a loan, secured by business assets, at an interest $r_L = \bar{v}/(1 - \epsilon)$, where $\bar{v}A$ is the total loan amount that must be repaid in the next period, and $(1 - \epsilon)$ is the fraction of debt finance.

The model has three interest rates:

r_L : business loan interest rate (determined endogenously for each entrepreneur by the model);

r_f : risk-free rate (exogenous); and

r : entrepreneur's opportunity cost of providing equity to the firm.

Entrepreneur net worth w consists largely of illiquid assets, such as home equity or retirement savings. When an entrepreneur uses these personal funds to provide equity to the firm, their op-

¹²We consider a composite lender that supplies all liabilities – bank loans, trade credit and other liabilities.

¹³Small firms lack access to long-term loans because they often do not have audited financial statements, payment or profit histories, or verifiable contracts with workers, input suppliers or customers.

¹⁴The risky technology and w_0 are ex-ante identical, but net-worth and consumption evolve stochastically over time.

portunity cost, r , is significantly larger than the risk-free rate r_f . Thus, r exceeds r_f .¹⁵ Since entrepreneurs have a positive default probability in equilibrium, loan rate r_L will exceed r , which makes it optimal for the entrepreneur to mix personal funds (equity) and increase returns by leveraging, i.e., using outside funds (debt). Given a level of business assets A in a period, an entrepreneur determines the optimal financial structure by choosing the percentage of self-finance ϵ . Thus, total equity is ϵA and debt is $(1 - \epsilon)A$ at the beginning of the period. At the end of each period assets are Ax and the firm owes $A\bar{v}$.

The firm faces a borrowing constraint, $(1 - \epsilon)A \leq bw$, which limits business loans to percentage b of entrepreneur net-worth, e.g., Evans and Jovanovic (1989). Our constraint depends on agent net worth w , which includes both firm and personal assets. Of course firm assets can be seized in bankruptcy, but the constraint indicates that the bank also takes account of the fact that the entrepreneur can use personal assets to “bail out the firm.” Because the project’s expected return exceeds the lender’s opportunity cost of funds (r_f) plus expected default costs, the risk neutral lender would like projects to be highly levered and run at a large scale. The constraint imposes lending limits on entrepreneurs of each risk type, ensuring the lender does not gamble on a single project.

Ex post, the entrepreneur chooses whether to repay loan $A\bar{v}$ or default.¹⁶ When default occurs, bankruptcy follows immediately and is described by two parameters, δ and T . The court determines the total value of firm assets and transfers $1 - \delta$ percent to the lender, where δ is a deadweight bankruptcy loss (e.g., firm assets are sold at a loss). The entrepreneur is protected by limited liability (only firm assets can be seized), but has the option to pay firm debt with personal funds if this is optimal. If bankruptcy occurs, the entrepreneur does not have access to the firm’s returns for T periods, which has two interpretations. First, corresponding to Chapter 7 in the U.S. Bankruptcy Code, the firm may be liquidated. Because bankruptcy remains on a credit record for a period of time, creditors and customers would be unwilling to do business with the entrepreneur during this period.¹⁷ Second, corresponding to Chapter 11, the firm may continue to operate, but is owned by the debt-holders who make investments and receive payments, or shut it down. After T periods, when the credit record is clean, the entrepreneur can either restart a new firm or regain control of the original firm, in Chapter 7 or 11 respectively.

The timing of events for incorporated firms is as follows:

¹⁵In section 4 we consider a business loan financed by home equity with $r = 4.5\%$ and lender opportunity cost, $r_f = 1.2\%$, given by the real 6-month T-bill rate.

¹⁶A firm may default if it is unable to repay $A\bar{v}$ (firm plus personal assets are less than A) and unwilling to repay otherwise. Owners can “bail out the firm” with personal assets to forestall bankruptcy, but cannot be forced to do so.

¹⁷In our model personal credit histories affect business loans, causing a credit interruption. Mester (1997) p. 7 finds that in small business loan scoring models, “the owner’s credit history was more predictive than net worth or profitability of the business” and “owners’ and businesses’ finances are often commingled”.

1. Beginning of period t (*ex-ante*) entrepreneur net-worth is w . There are two cases:
 - (a) *The entrepreneur has not declared bankruptcy in any of the previous T periods.* The entrepreneur chooses consumption c , firm assets A , self-finance ϵ (debt is $1 - \epsilon$), and amount \bar{v} to repay per unit A , subject to the lender receiving an ex-ante expected payoff of at least $(1 - \epsilon)(1 + r_f)$.
 - (b) *The entrepreneur declared bankruptcy k periods ago.* The owner cannot operate the firm for the next $T - k$ periods. Hence, only current consumption is chosen.
2. At the end of period t (*ex-post*) the firm's return on assets, x , is realized. Total end-of-period firm assets are Ax . The entrepreneur must decide whether or not to default. If
 - (a) *Default:* Only firm assets are seized; the entrepreneur is left with personal net-worth $(1 + r)(w - \epsilon A - c)$, personal assets invested at outside interest rate r .
 - (b) *No Default:* Entrepreneur net-worth is $A(x - \bar{v}) + (1 + r)(w - \epsilon A - c)$, which includes both net-equity in the firm and the return on personal assets.

3 An Individual Agent's Problem

Consider the optimization problem of an agent, with a given coefficient of risk aversion ρ . The goal is to determine the structure of the value function. We state the problem recursively, with beginning of period entrepreneur net-worth w . If bankruptcy occurred in the previous T periods, then the state is given by (B, k, w) where k is the number of periods since default. Otherwise, the state is given by (S, w) . Denote the value functions by $V_{B,k}(w)$ and $V_S(w)$, respectively. After T periods the firm can restart, thus $V_{B,T}(w) = V_S(w)$. Let \mathfrak{B} denote the set of asset return realizations x for which bankruptcy occurs, with complement \mathfrak{B}^c .

If the firm did not default in the previous T periods, the agent solves:

Problem 1
$$V_S(w) = \max_{c,A,\epsilon,\bar{v}} u(c) + \beta \left[\int_{\mathfrak{B}} V_{B,1}((1+r)(w - \epsilon A - c)) dF(x) + \int_{\mathfrak{B}^c} V_S(A(x - \bar{v}) + (1+r)(w - \epsilon A - c)) dF(x) \right]$$

Subject to:

$$\int_{\mathfrak{B} \cap \mathbb{R}_-} x dF(x) + \int_{\mathfrak{B} \cap \mathbb{R}_+} (1 - \delta)x dF(x) + \int_{\mathfrak{B}^c} \bar{v} dF(x) \geq (1 - \epsilon)(1 + r_f) \quad (1)$$

$$x \in \mathfrak{B} \text{ if and only if } V_{B,1}((1+r)(w - \epsilon A - c)) > V_S(A(x - \bar{v}) + (1+r)(w - \epsilon A - c)) \quad (2)$$

$$(1 - \epsilon)A \leq bw \quad (3)$$

$$c \geq 0, A \geq 0, 0 \leq \epsilon \leq 1. \quad (4)$$

The objective is an agent's utility of current consumption plus the discounted continuation value of end of period net-worth. Constraint (1) ensures that the lender is willing to supply funds. The right-hand-side indicates that the $1 - \epsilon$ percent of funds the lender invests in the firm earns at least reservation return $1 + r_f$. The left-hand side is the lender's expected return from the loan: the first term accounts for the fact that the lender may absorb some losses when the firm's return is negative,¹⁸ the second term is the net amount recovered from firm assets in bankruptcy states with positive net returns (deadweight default loss δ arises only if x is positive and the firm has not lost more than the value of its assets in the period), the third term is the net amount recovered from personal assets and the fourth term is the fixed debt repayment in solvency states. Constraint (2) specifies ex-post optimality of the default decision: An entrepreneur will default if and only if the expected continuation payoff after default exceeds that from solvency.¹⁹ As discussed previously, constraint (3) is the borrowing constraint. Finally, (4) ensures consumption and assets are non-negative, and ϵ is a percentage.²⁰

Now consider the problem of a firm that defaulted $k \leq T$ periods ago. After T periods the firm can operate again, thus $V_{B,T}(\cdot) = V_S(\cdot)$. Let w' denote net-worth next period.

Problem 2 $V_{B,k}(w) = \max_{c,w'} u(c) + \beta V_{B,k+1}(w')$

Subject to:

$$c(1+r) + w' \leq w(1+r); \quad (5)$$

$$c, w' \geq 0. \quad (6)$$

¹⁸This can occur if the loan has an overdraft provision or the firm has trade credit. In the data, this corresponds to the case where the firm has negative equity and defaults.

¹⁹Bailing out the firm with personal funds means that the entrepreneur continues to operate the firm even if $x < \bar{v}$. In a one period model (instead of the dynamic model) both $V_{B,1}$ and V_S would be the identity mapping, and (2) would reduce to $x \in \mathfrak{B}$ if and only if $(1+r)(w - \epsilon A - c) > A(x - \bar{v}) + (1+r)(w - \epsilon A - c)$, which implies $x \in \mathfrak{B}$ if and only if $x < \bar{v}$ (bankruptcy only if the return is less than debt plus interest).

²⁰Ex ante ϵ is a percentage, but ex post negative equity may occur. This distinction arises because the non-negativity constraint on equity only applies ex-ante. Ex post, if the project realization is low, assets are low and end-of-period equity will be negative due to the accounting identity: assets = debt + equity.

The objective of problem 2 is expected ex-ante utility. If default occurred, the agent cannot operate the firm for T periods and chooses only consumption and saving, consistent with budget constraint (5) and non-negativity constraint (6).

We now use the fact that CRRA utility is scalable in wealth to determine the structure of the value function. Proposition 1 permits value functions $V_{B,1}$ and V_S to be replaced with a number v_S . The problem can be restated as a 1-dimensional fixed point problem in v_S , simplifying the analysis.²¹ The proof is in Appendix B.

Proposition 1 *Suppose that the entrepreneur has constant relative risk aversion. Let $v_S = V_S(1)$ and $v_{B,k} = V_{B,k}(1)$. Then $V_S(w) = w^{1-\rho}v_S$ and $V_{B,k}(w) = w^{1-\rho}v_{B,k}$.*

Applying Proposition 1 to Problem 2 it is straightforward to compute $v_{B,k}$ as a function of v_S . Further, Lemma 1 and Lemma 2 in Appendix B prove that the investor's constraint binds and bankruptcy set \mathfrak{B} is a lower interval, with cutoff x^* . Thus, the optimization problem can be rewritten as follows, where all endogenous variables are expressed as a percentage of net-worth w :

Problem 3
$$v_S = \max_{c,A,\epsilon,\bar{v}} u(c) + \beta v_B \int_{\underline{x}}^{x^*} \left[(1+r)(1-\epsilon A - c) \right]^{1-\rho} dF(x) \\ + \beta v_S \int_{x^*}^{\bar{x}} \left[A(x - \bar{v}) + (1+r)(1-\epsilon A - c) \right]^{1-\rho} dF(x)$$

Subject to:

$$\int_{\underline{x}}^{x^*} \min\{(1-\delta)x, x\} dF(x) + \int_{x^*}^{\bar{x}} \bar{v} dF(x) = (1-\epsilon)(1+r_f) \quad (7)$$

$$x^* = \max \left\{ \bar{v} - \left[1 - \left(\frac{v_B}{v_S} \right)^{\frac{1}{1-\rho}} \right] \frac{(1+r)(1-\epsilon A - c)}{A}, x \right\} \quad (8)$$

$$c + \epsilon A \leq 1 \quad (9)$$

$$(1-\epsilon)A \leq b \quad (10)$$

$$c \geq 0, A \geq 0, 0 \leq \epsilon \leq 1. \quad (11)$$

²¹We need only $v_{B,1}$, the continuation utility given that default was just announced, and v_S . To simplify notation, write v_B for $v_{B,1}$.

The objective is to maximize the utility of current consumption and the discounted value of end of period net-worth in firm bankruptcy and solvency states. Constraint (7) corresponds to lender individual rationality constraint (1), and binds by Lemma 1 in Appendix B. Constraint (8) is the optimal default cutoff and follows from (2) by Lemma 2. (9) ensures feasibility and (10) is the borrowing constraint. (11) is obvious.

Problem 3 is non-convex because the timing of decisions leads to a commitment problem: c , A , ϵ , \bar{v} are chosen ex-ante, but the bankruptcy decision is made ex-post and the firm cannot commit to refrain from bankruptcy. This implies that default set cutoff x^* is determined by (8). Lotteries cannot be used to convexify the problem because independent randomization over A , ϵ , c , \bar{v} and x^* is not possible. See Krasa and Villamil (2000), Krasa and Villamil (2003) for an analysis of randomization and commitment.

3.1 Existence and Uniqueness

Proposition 2 *There exist $\underline{\rho} < 1$ and $\bar{r} > \frac{1}{\beta} - 1$ such that Problem 3 has a solution for all $\rho \geq \underline{\rho}$ and for all $r \leq \bar{r}$.*

Let $\Gamma(v_S)$ be the expected utility given continuation value v_S . In general $\Gamma'(v_S) > 1$ for all v_S close to 0. Thus, Γ is not a contraction mapping because net-worth is unbounded. In the proof of Proposition 2 in Appendix B, we show that $\Gamma(0) \leq 0$ and that there exists v_S such that $\Gamma(v_S) \geq 0$ for risk aversion $\rho > 1$. As a consequence of the intermediate value theorem, continuity of Γ implies that Γ has a fixed point. By continuity, the result extends for some $\rho < 1$.

If there is more than one solution to the recursive problem, then the solution with the maximal v_S corresponds to the solution of the infinite horizon problem where agents select sequences for consumption, assets, debt-equity and default.

3.2 Heterogeneous Entrepreneurs & Model Predictions

Agents are heterogeneous with respect to risk aversion. This requires matching model predictions and data in terms of *distributions* (see Krusell and Smith (1998)). We now specify the distributions predicted by the model for end-of-period firm assets, personal net-worth invested in the firm, and the ratio of equity over assets (firm capital structure). Given firm return pdf $f(x)$ and risk aversion pdf $g_{\mu,\sigma}(\rho)$, the cdfs predicted by the model are:²²

²²We will construct $f(x)$ and $g_{\mu,\sigma}(\rho)$ in the quantitative analysis.

Cdf of Net-Worth: After realization x , firm assets are $A(\rho)x$ and debt is $A(\rho)\bar{v}$. Equity in the firm is $A(\rho)(x - \bar{v}(\rho))$, which is positive if $x \geq \bar{v}(\rho)$. Owner personal net-worth outside the firm is $(1 + r)(1 - c(\rho) - \epsilon(\rho)A(\rho))$. The percent of total net-worth invested is

$$w = \frac{A(\rho)(x - \bar{v}(\rho))}{A(\rho)(x - \bar{v}(\rho)) + (1 + r)(1 - c(\rho) - \epsilon(\rho)A(\rho))}. \quad (12)$$

It follows immediately that w is strictly increasing in x . We can solve this equation for $x = x(w, \rho)$. The percent of net-worth invested is less than or equal to w for all $x \leq x(w, \rho)$. For firms with positive equity, the cdf of net worth is therefore given by²³

$$W_{\mu, \sigma}^m(w) = \frac{\int_{-\infty}^{\underline{\rho}} \int_{\bar{v}(\rho)}^{x(w, \rho)} f(x)g_{\mu, \sigma}(\rho) dx d\rho + \int_{\underline{\rho}}^{\infty} \int_{\bar{v}(\rho)}^{x(w, \rho)} f(x)g_{\mu, \sigma}(\rho) dx d\rho}{\int_{\bar{v}(\rho)}^{\infty} f(x) dx}. \quad (13)$$

Cdf of Equity/Assets: The percent of equity is given by

$$e = \frac{A(\rho)(x - \bar{v}(\rho))}{A(\rho)x}.$$

Solve this equation for $x = x(e, \rho)$. For firms with positive equity, the cdf of equity/assets is therefore

$$E_{\mu, \sigma}^m(e) = \frac{\int_{-\infty}^{\underline{\rho}} \int_{\bar{v}(\rho)}^{x(e, \rho)} f(x)g_{\mu, \sigma}(\rho) dx d\rho + \int_{\underline{\rho}}^{\infty} \int_{\bar{v}(\rho)}^{x(e, \rho)} f(x)g_{\mu, \sigma}(\rho) dx d\rho}{\int_{\bar{v}(\rho)}^{\infty} f(x) dx}. \quad (14)$$

Cdf of End of Period Assets: The current realization of end of period assets as a percent of net-worth outside the firm is

$$a = \frac{A(\rho)x}{(1 + r)(1 - c(\rho) - \epsilon(\rho)A(\rho))}. \quad (15)$$

Solve this equation for $x = x(a, \rho)$ to get the cdf of end of period assets

$$A_{\mu, \sigma}^m(a) = \int_{-\infty}^{\underline{\rho}} \int_{\underline{x}}^{x(a, \rho)} f(x)g_{\mu, \sigma}(\rho) dx d\rho + \int_{\underline{\rho}}^{\infty} \int_{\underline{x}}^{x(a, \rho)} f(x)g_{\mu, \sigma}(\rho) dx d\rho. \quad (16)$$

4 Mapping the Model to U.S. Data

We use U.S. data to assign values to five model parameters and to construct the distribution of firm returns. We jointly calibrate three remaining parameters. In table 1, we identify r_f , the lender's opportunity cost of short-term funds, with the average real return on 6 month Treasury

²³The denominator is the probability that the entrepreneur has positive equity, where $\underline{\rho}$ is the lowest parameter for which a model solution exists. For all $\rho < \underline{\rho}$ we assign the model solution as explained in section 5.

Table 1: Exogenous Parameters

Parameter	Interpretation	Value	Comment/ Observations
r_f	lender opportunity cost	1.2%	real rate, 6 mo T-Bill, 1992-2006
r	entrepreneur opportunity cost	4.5%	real rate, 30 year mortgage, 1992-2006
β	discount factor	0.97	determined from r and r_f
T	default exclusion period	11	U.S. credit record
δ	default deadweight loss	0.10	Boyd-Smith (1994)

bills between 1992 and 2006.²⁴ The interest rate charged by the lender will be strictly higher than r_f because of bankruptcy costs. We identify the owner’s opportunity cost of funds r with the real rate on 30 year mortgages over the period; the cost of using home equity to finance a business loan will also be strictly higher. $\beta = 0.97$ is approximated by $1/(1 + 0.5r_f + 0.5r)$, with r and r_f weighed equally (firm risk cannot be diversified since a portfolio of small firms does not exist). The bankruptcy parameters are $T = 11$, because in the U.S. after 10 years past default is removed from a credit record, and $\delta = 0.1$, the bankruptcy deadweight loss in Boyd and Smith (1994) and the midpoint of costs of 0-20% of assets in Bris, Welch, and Zhu (2006).

Herranz, Krasa, and Villamil (2009) use data from the Survey of Small Business Finance (SSBF) on incorporated firms to compute firm return distribution $f(x)$.²⁵ They assume firms have access to a common constant returns to scale “blue print” technology. The return per unit of asset for a particular firm is a sample point from this distribution (see section 10.1). Table 2 shows that $f(x)$ is risky, with rightward skew and a long upper tail.²⁶

Table 2: Real Firm Return on Assets for Incorporated Firms: Summary Statistics

Moment:	median	mean	standard dev.	skewness	kurtosis
1993 SSBF	1.094	1.30	1.57	13.2	290
95% conf.	[1.08, 1.11]	[1.22, 1.38]	[0.95, 2.13]	[2.3, 17.3]	[29, 488]

The remaining parameters are jointly calibrated by choosing b , μ , σ to minimize the distance

²⁴We use monthly data for T-Bill rates and deduct for each month the CPI reported by the BLS.

²⁵The SSBF is a survey administered by The Board of Governors of the Federal Reserve System and the U.S. Small Business Administration in 1987, 1993, 1998 and 2003. Each survey is a cross section of about 4000 non-farm, non-financial, non-real estate small businesses that represents about 5 million firms. All surveys are available at <http://www.federalreserve.gov>. The surveys contain information on the characteristics of small firms and the primary owner (e.g., owner age, gender, industry, type of business organization), firm income statements and balance sheets, details on the use and source of financial services, and recent firm borrowing experience (including trade credit and capital injections such as equity). We consider only incorporated firms with assets of at least \$50,000.

²⁶95% confidence bands are computed for each moment using bootstrap sampling, except the interquartile range is reported for the median. Only the 1993 SSBF has interest payments, required to compute return on assets.

between model predictions and data. We first construct two empirical cumulative density functions from the SSBF data. The empirical cdf of net-worth invested is, $W^e(w)$:²⁷

$$\frac{\text{owners' share} * \text{equity}}{\text{net-worth outside the firm} + \text{owners' share} * \text{equity}}.$$

The empirical cdf of end-of-period assets per unit of net-worth, $A^e(a)$, is:

$$\frac{\text{owners' share} * \text{asset}}{\text{net-worth outside the firm}}.$$

The model-predicted median assets are $a_{\mu,\sigma}$ such that $A_{\mu,\sigma}^m(a_{\mu,\sigma}) = 0.5$.

Parameters b , μ , σ are chosen to minimize the supnorm distance between the cdf implied by the model and the cdf from the SSBF data:

$$\min_{b,\mu,\sigma \geq 0} \|W_{\mu,\sigma}^m(w) - W^e(w)\|_{\infty} + (0.431 - a_{\mu,\sigma})^+ + (a_{\mu,\sigma} - 0.519)^+ \quad (17)$$

The cdf of net-worth invested implied by the model, $W_{\mu,\sigma}^m(w)$, is given by (13). The supremum norm $\|\cdot\|_{\infty}$ is taken over all non-negative percentages of net-worth.²⁸ The second and third terms impose penalties only for asset values outside the 95% confidence interval for firm assets, which Herranz, Krasa, and Villamil (2009) find is [43.1,51.9]. Since we exclude firms with negative equity when determining W^e , net-worth invested is between 0% and 100%, but assets are unbounded.²⁹ The lack of a well defined upper bound for assets is a problem because tail behavior would greatly impact model prediction; requiring the median asset level to lie in its 95% confidence interval solves this problem.

Table 3: Calibrated Parameters

Parameter	Interpretation	Est. Value
$b\%$	borrowing constraint: loan $\leq bw$	21.5
μ	median of distribution of risk aversion	1.55
σ	standard deviation of distribution of risk aversion	0.83

Table 3 reports the calibrated parameters. The model predicts a maximal ex-ante loan size of 21.5% of entrepreneur net-worth. These loans are secured by risky business assets because the

²⁷ $W^e(w)$ is the number of observations, accounting for sample weights, at which the percent of net-worth invested is less than or equal to w .

²⁸ To compute the supremum norm we evaluate $|W_{\mu,\sigma}^m(w) - W^e(w)|$ at 1,000 equidistant points between 0 and 1, and take the maximum. Appendix C shows the estimates are not affected by using square distance

$$\sqrt{\int (W_{\mu,\sigma}^m(w) - W^e(w))^2 dw + ((0.431 - a_{\mu,\sigma})^+)^2 + ((a_{\mu,\sigma} - 0.519)^+)^2}$$

²⁹ For example, 5% of firms had assets over ownership share that exceeded owner net-worth by 500%.

firm is incorporated; the lender cannot seize personal assets in default. The median risk aversion of the owner of an incorporated firm is 1.55, with a standard deviation of 0.83. Thus, about 75% of all such entrepreneurs have a coefficient of risk aversion between 1 and 3, the range in real business cycle models. Using the Consumer Expenditure Survey, Mazzocco (2006) estimates a median coefficient of risk aversion of 1.7 for men. We would expect entrepreneurs to be somewhat less risk averse than the general population; our estimate for ρ is in line with this.³⁰ Parameters μ and σ are used to construct the distribution of risk aversion for incorporated firms, $g_{\mu,\sigma}(\rho)$, the final object in the model that must be mapped into data.

Appendix A shows that the values of the calibrated parameters do not vary significantly with δ and T . The insensitivity to changes in δ is due to the low equilibrium default rate. Table 12 shows that the best model fit is obtained at a value of $T = 13$. Thus, if we had calibrated T instead of choosing it to be consistent with U.S. institutions, the numbers for the calibrated parameters and model results would not have changed significantly.

5 Matching Model Predictions and Data

Our model is quantitatively plausible along a number of dimensions. Figure 1 compares the cdfs predicted by the model (computed as explained in section 3.2) with SSBF data.³¹ The first panel shows the model-predicted and empirical cdfs for the percent of net-worth an owner invests in the firm. Since we fit to this empirical cdf one would expect to see a match, but the match is surprisingly good given there are only three fitting parameters. The data show that owners invest substantial personal net-worth in their firms: the median is 21% and the mean is 27%. The data also show a surprising lack of diversification: 3% invest more than 80%, 11% invest more than 60%, 25% invest more than 40% and 52% invest more than 20%. The model replicates these facts.

The next panel compares the predicted cdf of firm assets to its empirical counterpart. The match between these cdfs is also good, but the model under predicts a few large firms. This occurs because model solutions do not exist below $\underline{\rho} = 0.74$, and we assign point mass of $\mu(\{\rho \leq \bar{\rho}\})$ to $\underline{\rho}$. At $\underline{\rho}$, the ex-ante level of ϵ and A are 0.720 and 0.766, respectively. Thus, end of period net-worth outside the firm, $(1 - \epsilon A - c)(1 + r)$ is about 0.470. Using median return $\hat{x} = 1.094$ from table 2, the ex-post level of assets as a percentage of net-worth for risk aversion level $\underline{\rho}$ is

³⁰Since Mazzocco (2006) does not estimate the distribution of risk aversion, his estimate of the standard deviation of 0.96 is close, but not directly comparable to ours. We discuss gender differences in section 7.2.

³¹Owner net worth, personal net-worth plus home equity, is only in the 1998 SSBF. The data cdf for the percent of net-worth invested is for firms with positive net-worth outside the firm and non-negative equity. Only firms with at least \$50,000 in assets are included.

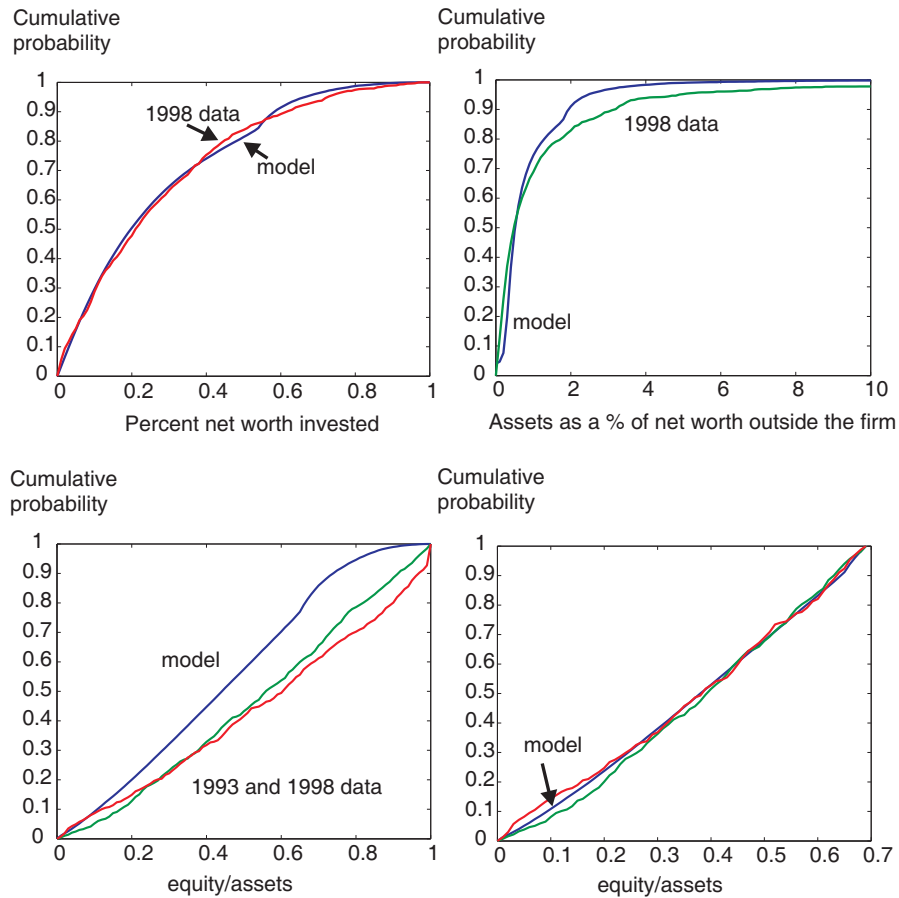


Figure 1: Model Predictions and SSBF Data for incorporated firms: cdfs

$A\hat{x}/(1 - \epsilon A - c)(1 + r)) = 1.786$. In the graph, this is the range where the model predicted curve moves away from the data. The model predicted median asset level of 48.1% in table 4 below is well within the 95% confidence interval of [43.1, 51.9]. This also shows that the penalty term in (17) is not relevant in the neighborhood of the optimal parameters.

The bottom panels of figure 1 compare the model prediction for firm capital structure to the empirical cdfs for 1993 and 1998. The left panel shows that the model somewhat over predicts equity/assets. This again occurs because no model solutions exist below $\underline{\rho}$ and (14) assigns point mass to these values. At $\underline{\rho} = 0.74$ the associated value of \bar{v} is 0.335. At median return level $\hat{x} = 1.094$, this gives an ex post value of equity/assets of $(\hat{x} - \bar{v})/\hat{x}$ is about 0.7, which is where the kink in the left panel occurs. If the cdf of ϵ is computed conditional on $\epsilon < 0.7$, the model does an excellent job of replicating the empirical distribution of equity/assets among firms – see the right panel. By definition total assets are debt plus equity, thus equity/assets is a measure of firm capital structure. The approximately uniform cdf indicates that all capital structures are equally likely and

this suggests agent heterogeneity, if individual firm capital structure is optimal.³²

Table 4: Model Point Estimates

Parameter	Interpretation	Model	Data
median A %	median firm assets (size)	48.1	[43.1, 51.9]
consumption %	consumption as a percent of net worth	3.6	3-5
default %	small firm default rate	4.4	3.5-4.5
neg. equity %	negative equity in the firm	10.6	15.7, 21.0

Table 4 shows that the model replicates successfully other targets. Median firm assets match well (as discussed above) and consumption is in the standard range.³³ The default prediction is slightly higher than the average annual default rate of 3.5% on small business loans guaranteed by the Small Business Administration reported by Glennon and Nigro (2005) and close to the default rate on trade credit of 4.5% Boissay and Gropp (2007), table 2.4 estimate for small French firms.³⁴

Negative equity, accounted for in the model in constraint (1), indicates that non-business assets are used to cover business losses (e.g., personal funds or unpaid bills absorbed by creditors). The model value of 10.6% is below the SSBF empirical values of 15.7% in 1993 and 21.0% in 1998 reported by Herranz, Krasa, and Villamil (2009). The use of personal funds to “bail out” a firm may seem puzzling since we consider only incorporated firms, which are protected by limited liability in bankruptcy. Why do these entrepreneurs not simply default on their loans? In a dynamic model an entrepreneur will not default, and hence will continue to operate a poorly performing firm, if the firm’s expected discounted continuation value is sufficiently high. While the benchmark model’s predicted level of negative equity falls short of the values observed in the SSBF, section 7.4 will show the model can match the data if entrepreneurs are slightly optimistic.

Finally, parameters μ and σ were used to construct the distribution of risk aversion, $g_{\mu,\sigma}(\rho)$, with mean risk aversion parameter $\mu = 1.55$. In order to better understand the effect of risk aversion on endogenous parameters, table 5 shows how the loan size, firm size, financial structure, debt burden and default vary as risk aversion increases. The percentage of net-worth an entrepreneur borrows, $(1 - \epsilon)A$, is constant when borrowing constraint (3) binds and falls as the risk aversion parameter increases because the borrowing constraint becomes slack. More risk averse agents also run smaller firms, A , and use less of their own money, ϵ . As a consequence, firms become more leveraged and their debt burden rises, \bar{v} , which increases the incentive to default. Consumption is

³²A uniform distribution for all firms is consistent with a determinate capital structure for each firm.

³³Point estimates for expected percent of net-worth spent on consumption and the default probability are $\int_{-\infty}^{\rho} c(\rho)g_{\mu,\sigma}(\rho) d\rho + \int_{\rho}^{\infty} c(\rho)g_{\mu,\sigma}(\rho) d\rho$ and $\int_{-\infty}^{\rho} \int_{\underline{x}}^{x^*(\epsilon,\rho)} f(x)g_{\mu,\sigma}(\rho) dx d\rho + \int_{\rho}^{\infty} \int_{\underline{x}}^{x^*(\epsilon,\rho)} f(x)g_{\mu,\sigma}(\rho) dx d\rho$.

³⁴They report that trade credit is a third of all firms’ total liabilities in most OECD countries.

Table 5: Entrepreneur's Ex-Ante Optimal Choice and Risk Aversion

ρ	0.9	1.2	1.5	1.8	2.1	2.5	3.0	3.5	4.0
$(1 - \epsilon)A$ %	21.5	21.5	21.5	21.5	21.5	18.7	15.2	12.8	11.1
A %	61.0	44.2	35.3	30.0	27.0	22.7	18.3	15.4	13.3
ϵ %	64.8	51.5	39.1	28.5	20.4	17.6	17.2	16.8	16.5
\bar{v}	0.409	0.550	0.682	0.798	0.891	0.921	0.925	0.928	0.930
default %	3.6	3.7	4.0	4.6	5.4	5.6	5.4	5.2	5.1
c %	2.2	4.0	4.6	4.9	5.0	5.0	5.0	4.9	4.9

roughly constant except for the agents most willing to bear risk, where current consumption (as a percentage of net worth) is lower because they invest more now to consume more in the future.

6 Welfare Effects of Limited Liability

Up to this point we have focused on incorporated firms.³⁵ However, in the SSBF roughly half the firms are incorporated and half are unincorporated. We now consider the welfare effects of incorporation, assuming the return distributions of both types of firms are similar. The main benefit of incorporation is limited liability: an owner's personal assets are held separately from business assets and cannot be seized by creditors. A secondary benefit is taxation (e.g., firm owners may lower self employment taxes by organizing as S-corporations) and disadvantages include small legal costs and information disclosure requirements. In order to understand why incorporated and unincorporated small firms co-exist, we focus on the effect of limiting personal liability on ex-ante welfare. Our main finding is that the less risk-averse receive higher welfare from incorporation and the more risk-averse tend to be better off remaining unincorporated. This occurs because less risk-averse owners run bigger firms with higher intertemporal value, which tempers their incentive to default. In contrast, the more risk averse are unable to credibly commit ex-ante to refrain from defaulting ex post; putting some personal assets at risk by forgoing incorporation mitigates this commitment problem.

In the baseline model, limited liability corresponds to $\gamma = 0$. We now relax this assumption by considering a legal system in which unincorporated agents can be forced to pay a percentage $\gamma > 0$ of personal assets $(w - \epsilon A - c)(1 + r)$ to investors. That is, unincorporated owners are personally liable for firm debt, and in the extreme case of $\gamma = 1$ all personal net-worth can be seized if the

³⁵SSBF data do not contain sufficient information to compute ROA for unincorporated firms (owner wage is not reported). See Herranz, Krassa, and Villamil (2009) for discussion of this issue.

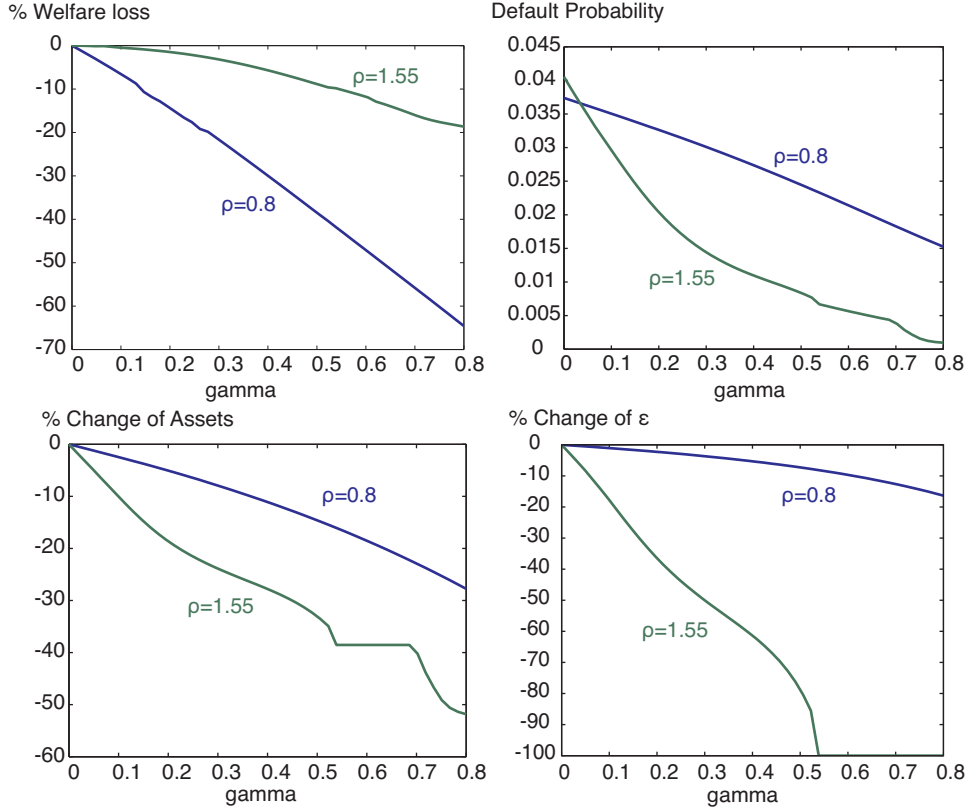


Figure 2: Impact of changes in γ on entrepreneurs with lower risk aversion levels

firm defaults.³⁶ Appendix E modifies Problem 1 to account for γ . In the objective, expression $(w - \epsilon A - c)(1 + r)$ in the default integral is replaced by $(1 - \gamma)(w - \epsilon A - c)(1 + r)$. The investor receives $\gamma(w - \epsilon A - c)(1 + r)$, after deadweight loss δ is deducted. Clearly, default cutoff x^* is also affected and is decreasing in γ . Appendix E shows that Problem 1 is equivalent to a slightly modified version of Problem 3 in which the integrand over default states is $(1 - \gamma)(1 - \epsilon A - c)(1 + r)$ and the investor receives $(1 - \delta)\gamma\left(\frac{1}{A} - \epsilon - \frac{c}{A}\right)(1 + r)$, which is divided by assets A since the investor's constraint specifies the return per unit of assets.

Figure 2 shows that for agents with low (below median) risk aversion, any positive γ decreases welfare.³⁷ The loss is substantial, especially for those most willing to bear risk. Clearly, these

³⁶In the U.S., sole proprietors and partners are personally and jointly responsible for business liabilities. In practice, $\gamma = 1$ does not occur for unincorporated firms because some private assets are exempt from seizure (e.g. some equity in a home, retirement assets, and personal assets). Thus even if a firm is unincorporated, the effective level of γ is significantly less than 100% and varies across individuals (with different portfolios and asset class exemptions).

³⁷Welfare is computed using the equivalent variation, which for given ρ and γ is the λ such that $V_S^\gamma(\lambda w) = V_S^\gamma(w)$; $V_S^\gamma, V_S^{\gamma'}$ are value functions in solvency given exemption parameters γ and γ' . Proposition 1 implies that $V_S^\gamma(\lambda w) = \lambda^{1-\rho} V_S^\gamma(w)$. Further, $V_S^\gamma(w) = w^{1-\rho} V_S^\gamma(1) = v_S^\gamma$ and $V_S^{\gamma'}(w) = w^{1-\rho} V_S^{\gamma'}(1) = v_S^{\gamma'}$. The welfare change is $\lambda = (v_S^\gamma / v_S^{\gamma'})^{\frac{1}{1-\rho}}$.

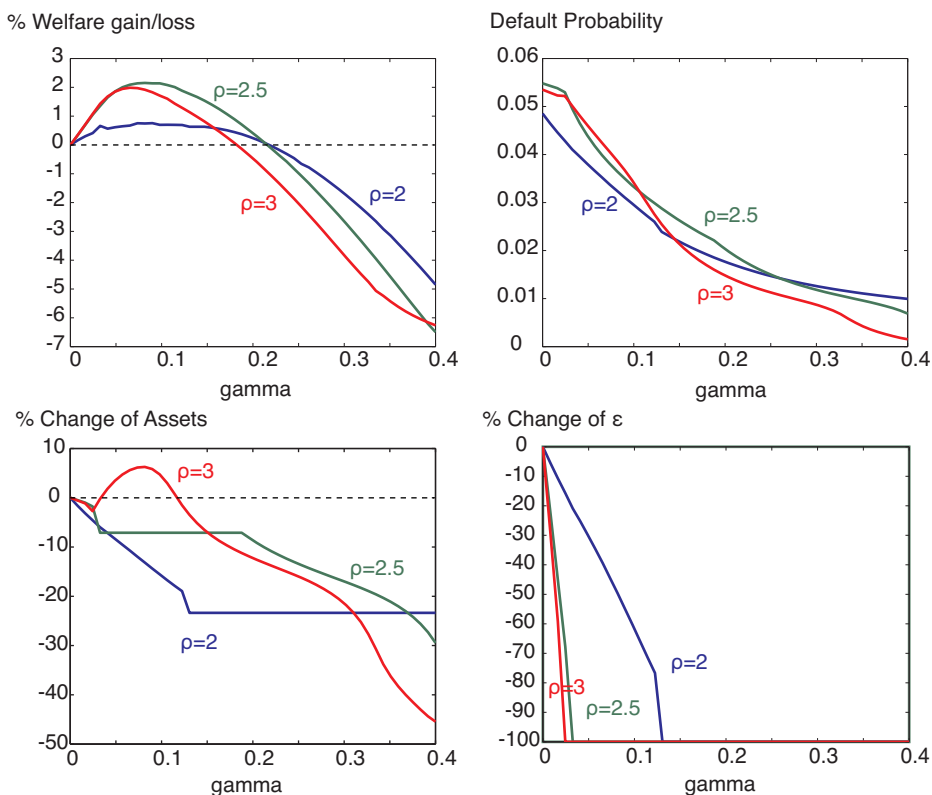


Figure 3: Impact of changes in γ on entrepreneurs with higher risk aversion levels

agents would wish to incorporate to protect personal assets and raising γ is detrimental them: While raising γ lowers default (see the top-right panel), this benefit is outweighed by the fact that raising γ discourages risk taking, resulting in a substantial decrease in firm size (see the bottom-left panel). The size reduction is bigger for entrepreneurs with $\rho = 1.55$, but since less of their net worth is tied up in the firm, their welfare loss is lower. The reduction in the default probability with γ implies that interest rates and thus borrowing costs decline, which implies that ϵ decreases as the firm will use more outside funds. In summary, the net effect of increasing γ is to reduce the insurance provided by bankruptcy, which in turn discourages socially beneficial risk-taking.

In contrast, figure 3 shows that more risk averse agents could increase welfare by forgoing limited liability for some values of γ . This occurs because higher ρ agents run smaller firms, hence the loss from exclusion is smaller. This implies that ratio v_B/v_S is increasing in ρ , which in turn implies that x^* is larger.³⁸ If entrepreneurs could commit ex-ante to a default cutoff x_c^* (i.e., if constraint (8) was eliminated), then $x_c^* < x^*$. Thus inability to commit leads to higher default, which is costly.

³⁸Continuation value v_S is increasing in A , i.e., bigger firms have greater losses from exclusion. Thus $v_B/v_S < 1$, but it converges to 1 as $A \rightarrow 0$.

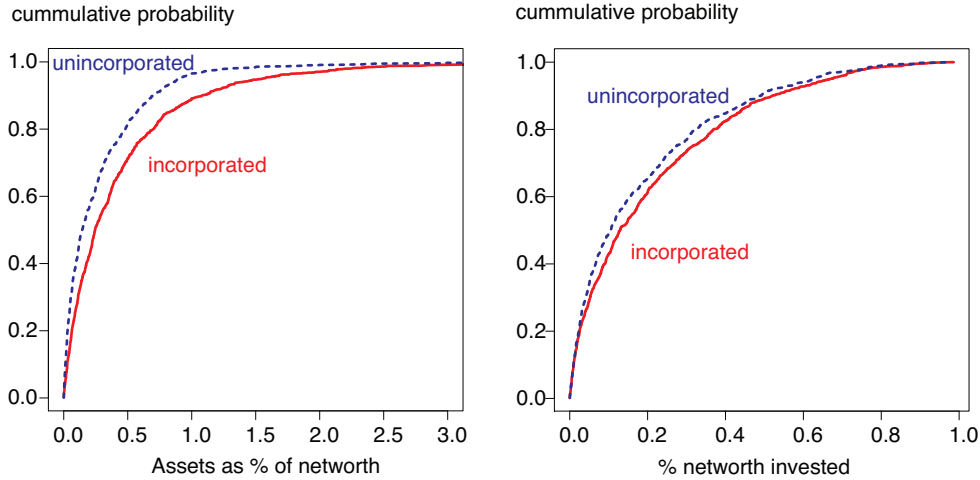


Figure 4: Assets as a percentage of net worth and net worth invested in the firm for 1998

Raising γ lowers x^* , moving the default cutoff closer to the efficient (full commitment) level, x_c^* . As long as γ is not raised too much this benefit outweighs the cost of discouraging risk taking. Figure 3 also shows that increasing γ increases firm (asset) size for entrepreneurs with $\rho = 3$, but not for those with $\rho = 2$ and $\rho = 2.5$. Borrowing constraint (10) binds when $\epsilon \rightarrow 0$, and when this occurs $A = b$, i.e., the ex-ante choice of A is constant. In contrast, for $\rho = 3$ the borrowing constraint is slack for all values of γ . Raising γ lowers borrowing costs and the entrepreneur first responds by lowering ϵ , i.e., by using more outside funds. Once it cannot be reduced further because $\epsilon = 0$, the lower borrowing costs induce the firm to increase A . If γ becomes too large, however, the loss of insurance from bankruptcy starts to dominate and A is reduced.

If the more risk-averse tend to remain unincorporated, there are two observable implications. First, table 5 shows in the baseline model ($\gamma = 0$), less risk averse agents run larger firms (higher A), use more personal funds (higher ϵ), and risk aversion has little effect on consumption (c). (15) implies for given $x > 0$, the more risk averse will have a smaller posterior level of A . Second, one can check that (12) implies for given x , more risk-averse agents will invest less personal wealth in the firm. Figure 4 shows that both implications are true in the SSBF data.³⁹

Why do risk-averse entrepreneurs with a commitment problem not simply incorporate and pledge collateral? For example, the owner of a small unincorporated firm with retirement assets has two options: (i) Withdraw funds from the retirement account and post them as a bond with the lender. This is costly due to early withdrawal penalties and because long-term assets earn higher

³⁹The distributions in figure 4 report firms with positive equity and owners with positive net worth.

Table 6: Comparative statics for T : Fix $r_f = 1.2\%$, $r = 4.5\%$, $\beta = 0.97$, $\delta = 0.10$

T	6	7	8	9	10	11	12	13	14	15	16	20
med $A\%$	56.2	54.4	52.7	51.1	49.6	48.1	46.7	45.4	44.3	43.3	42.4	38.9
default%	6.1	5.6	5.3	5.0	4.7	4.4	4.2	4.0	3.8	3.6	3.5	2.9
cons.%	3.7	3.7	3.7	3.7	3.7	3.6	3.6	3.6	3.6	3.6	3.6	3.6
neg eq%	8.4	8.8	9.3	9.7	10.0	10.6	11.1	11.9	13.4	15.1	17.0	21.0

returns than more liquid investments. (ii) Leave the funds in the retirement account but promise to use them to cover business debts. The agent might renege on the promise or it may not be enforceable by a court. Remaining unincorporated effectively provides collateral when γ is known to all parties and enforced by bankruptcy courts at low cost.

In practice, remaining unincorporated and pledging collateral may be substitutes. The desirability of each alternative will depend on opportunity and enforcement costs. Furthermore, the effective amount of γ will differ significantly among entrepreneurs. For example, if most of an entrepreneur's net-worth is in home equity and the entrepreneur resides in a state that exempts all home equity γ will be very low, while if the state permits home equity to be seized γ will be higher. Second, tax advantages and disclosure requirements are likely to have differential impacts on entrepreneurs. Thus, the model suggests that more risk averse entrepreneurs are more likely to be unincorporated, but it does not imply a strict cutoff level of ρ .

7 Policy Experiments and Comparative Statics

Overall, the model is able to account for key properties of the data. In light of this success, we now undertake a series of policy experiments to better understand the effect of bankruptcy rules, liquidity constraints, risk aversion and optimism in explaining the data. We also perform a counterfactual exercise to show the importance of the return distribution. We now wish to evaluate the effect of policies versus innate characteristics, thus we conduct comparative static exercises and use equivalent variation to assess welfare (utilities of heterogeneous agents cannot be compared).

7.1 Bankruptcy Policy: T , δ

Bankruptcy Exclusion Period T :

Consider the effect of changes in T on welfare, where longer exclusion raises the penalty of bankruptcy. Table 6 fixes μ , σ , b , and evaluates the effect of altering the exclusion period from the

Table 7: Welfare Effect as T Varies: % change in net-worth compared to benchmark

risk aversion ρ	0.9	1.2	1.5	1.8	2.1	2.5	3.0	3.5	4.0
$T = 6$	36.9	11.2	7.7	6.1	5.0	3.9	3.1	2.6	2.2
$T = 8$	19.8	5.5	3.9	3.0	2.4	1.9	1.5	1.3	1.1
$T = 10$	6.3	1.3	1.1	0.8	0.7	0.5	0.4	0.3	0.3
$T = 11$	—	—	—	—	—	—	—	—	—
$T = 12$	-3.6	-0.7	-0.9	-0.7	-0.5	-0.4	-0.3	-0.3	-0.2
$T = 14$	-7.6	-4.4	-2.1	-1.8	-1.4	-1.0	-0.8	-0.6	-0.5
$T = 16$	-12.7	-6.5	-3.8	-2.4	-2.0	-1.5	-1.1	-0.9	-0.7

benchmark $T = 11$. As T decreases default increases rapidly. Firm size increases, measured by median asset level A . Because b is fixed, the decrease in total investment results in a decrease in equity and an increase in debt, which raises negative equity. One of the main economic arguments in support of recent U.S. bankruptcy reform was that more stringent bankruptcy rules lower interest rates, and therefore help borrowers. Table 13 in Appendix A shows that the loan rate indeed decreases as T increases. However, stricter bankruptcy provides less insurance against bad realizations, and this effect dominates. In particular, table 7 shows that lowering the exclusion period increases welfare, and the model implies that it is optimal to set T as low as possible. Decreasing T is beneficial in the baseline model because it allows a firm to restart and be productive, in accordance with the historical rationale for bankruptcy. Mandating $T = 0$ may not be possible or desirable in practice.⁴⁰

The tradeoff between insurance provided by firm bankruptcy and higher interest rates induced by increased default has been analyzed for consumer bankruptcy by Chatterjee, Corbae, Nakajima, and Rios-Rull (2007) and Livshits, MacGee, and Tertilt (2007). In both models consumers trade off insurance against health, divorce or family shocks versus consumption smoothing; the signs of the tradeoffs differ but the welfare effects are modest.⁴¹ The first paper finds that when the length of punishment is reduced from 10 to 5 years welfare drops by 0.05%, thus the negative effect from a higher interest rate and tighter borrowing constraint slightly dominates the insurance benefit of a shorter punishment period. The second paper shows that the insurance effect is sometimes weakly dominant, but again the effect is modest. Meh and Terajima (2008) add unincorporated entrepre-

⁴⁰For example, information frictions would make a very low T undesirable. Suppose entrepreneurs could choose between the blueprint return distribution and an alternative with more risk that is socially undesirable. In an institutional environment in which strong ex-ante and interim screening mechanisms exist and penalties are credible, a small T can be sufficient to avoid moral hazard or adverse selection. In contrast, a country with poor institutions would require a larger T to deter entrepreneurs from choosing the alternative distribution, thus generating additional inefficiencies.

⁴¹In our model credit is secured, for example by a house, and “bad luck” is a poor return x rather than the health, job, divorce or family shocks in the consumer models.

Table 8: Comparative Statics for b : $r_f = 1.2\%$, $r = 4.5\%$, $\beta = 0.97$, $\delta = 0.10$

b	0.10	0.15	0.20	0.21	0.25	0.30	0.35	0.40	0.50
median A %	46.9	47.1	47.8	48.1	49.0	50.5	51.8	52.4	52.5
default %	3.0	3.6	4.3	4.4	4.8	5.2	5.4	5.6	5.9
cons. %	3.6	3.6	3.6	3.6	3.7	3.7	3.7	3.6	3.6
neg Eq. %	5.7	7.7	10.0	10.6	11.7	12.9	13.6	14.2	15.0

neurs to the model, and find a larger welfare effect of 1.78%. In contrast, table 7 reports strong welfare effects from reducing the exclusion penalty in our model, particularly for agents with low levels of risk aversion. The main reason for the difference between our model of firm bankruptcy and the consumer bankruptcy models is that reducing the punishment period encourages entrepreneurs to invest more in their firms (operate at a larger scale), and increased output raises welfare. In this sense, even though we do not find extreme variations in ρ , risk interacts with the dynamic decision problem, return distribution and bankruptcy rules to have an important effect on some (heterogeneous) agents, namely those that invest most heavily in their firms.

Bankruptcy Cost δ : Appendix A analyzes bankruptcy cost δ (efficiency in liquidating firm assets) and table 16 shows the welfare effect is minor. However, if δ is very large and there are large fixed cost to creditors to recover payments in default, agents will try to avoid costly bankruptcy, through debt forgiveness or renegotiation. The static model of Krasa, Sharma, and Villamil (2008) shows that when courts are sufficiently inefficient substantial deadweight losses are possible.

7.2 Liquidity Constraints

Policy can also affect credit constraint parameter b . Table 8 shows that increasing b allows firms to borrow more, and hence operate at a larger scale A . The higher levels of firm debt, however, increase the percentage of firms who default or have negative equity. Table 9 shows substantial welfare effects from raising b for the least risk averse agents, but not for the more risk averse because for sufficiently high b the credit constraint does not bind. Comparing the welfare effects of T and b shows that an entrepreneur with median ρ benefits more from reducing T than from relaxing the borrowing constraint, in the baseline model. In practice, relaxing the borrowing constraint could be achieved by providing subsidized loans targeted to small business, such as SBA loans.

Table 9: Welfare Effect as b Varies: % change in net-worth compared to benchmark

risk aversion ρ	0.9	1.2	1.5	1.8	2.1	2.5	3.0	3.5	4.0
$b = 0.100$	-13.1	-8.5	-6.2	-4.9	-3.7	-2.2	-0.9	-0.2	-0.1
$b = 0.150$	-6.1	-4.8	-3.2	-2.0	-1.4	-0.4	0.0	0.0	0.0
$b = 0.200$	-1.8	-0.2	-0.6	-0.4	-0.1	0.0	0.0	0.0	0.0
$b = 0.215$	—	—	—	—	—	—	—	—	—
$b = 0.250$	8.2	1.7	1.3	0.6	0.0	0.0	0.0	0.0	0.0
$b = 0.300$	14.8	4.2	2.4	0.7	0.0	0.0	0.0	0.0	0.0
$b = 0.400$	26.6	7.2	2.7	0.7	0.0	0.0	0.0	0.0	0.0
$b = 0.500$	35.0	7.5	2.7	0.7	0.0	0.0	0.0	0.0	0.0

Table 10: Comparative Statics for μ : $r_f = 1.2\%$, $r = 4.5\%$, $\beta = 0.97$, $\delta = 0.10$

μ	1.15	1.25	1.35	1.45	1.55	1.65	1.75	1.85
median A %	74.3	65.4	58.3	52.7	48.1	44.4	41.2	38.6
default %	4.2	4.2	4.3	4.4	4.4	4.5	4.6	4.7
cons. %	2.8	3.0	3.2	3.5	3.6	3.8	4.0	4.1
neg Eq. %	8.4	8.9	9.5	10.0	10.6	11.1	11.7	12.3

7.3 Risk Aversion

Now consider the effect of changes in risk aversion. Clearly policy cannot modify μ , but comparative statics show how owner risk aversion affects the firm. In table 10, as μ increases, owners run smaller firms. Because b is fixed, these smaller firms have higher debt, which explains why negative equity and default rise with μ . Mazzocco (2006) finds that women are more risk averse than men (ρ of 5 versus 1.7). In our model this parameter change would imply that (i) less women own businesses, (ii) they run smaller firms,⁴² and (iii) they have higher negative equity. The SSBF data indicate that all three model implications are consistent with the data. In 1993 and 1998 women owned 16% and 24% of businesses, respectively. In 1998 median assets, normalized by net-worth outside the firm, were 39% for firms owned by women and 53% for men (the only year net-worth is reported). Finally, negative equity for women was 19.5% versus 14.8% for men, and 26.1% versus 19.4% in 1993 and 1998, respectively. Absent the model, the observation that firms run by more risk averse owners have more negative equity might seem counterintuitive.

⁴²In a very interesting study of nascent entrepreneurs, ?) table 6 documents that women plan to run smaller firms than men, suggesting an innate difference.

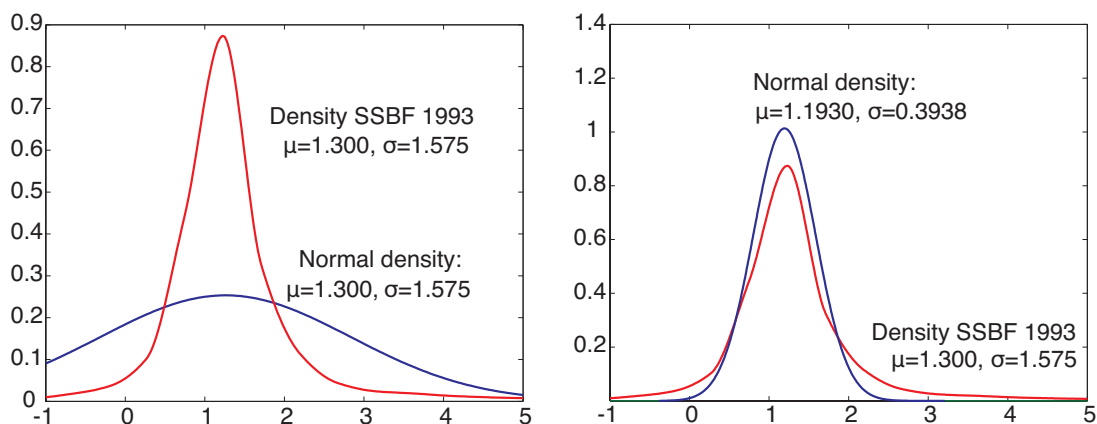


Figure 5: Empirical firm return pdf versus normal pdfs, SSBF 1993

7.4 Entrepreneur Optimism

How does optimism by entrepreneurs affect our results? Intuition suggests that less risk averse, less optimistic agents will behave similarly to more risk averse, more optimistic agents. This leads to an identification problem: optimistic agents may be observationally equivalent to less risk averse, non-optimistic agents. We now investigate whether the model has observable implications that are uniquely induced by optimism. Assume that an optimistic entrepreneur believes the firm's return exceeds the true return by some fixed percentage \bar{o} . Formally, this implies the entrepreneur assumes that firm returns are $X + \bar{o}$, which yields cdf $H(x - \bar{o})$ in the objective of problem 3. Assume the lender uses the correct distribution to determine payoff (7) in problem 3.

Tables 17 and 18 in Appendix A vary \bar{o} by 5% and 10% respectively, and fix all other parameters.⁴³ The tables show that slight optimism improves the fit in the baseline model with $T = 11$ while keeping μ , σ and the default rate in acceptable ranges. Liquidity constraint parameter b increases slightly, as does A . Negative equity increases to a level consistent with SSBF data because optimistic entrepreneurs run larger firms: they expect higher future returns relative to the baseline and increase the total amount of debt \bar{v} . Equity is negative if $x < \bar{v}$. When \bar{v} is higher, $x < \bar{v}$ is more likely and this increases the percentage of projects with negative equity. Mild entrepreneur optimism can thus account for the level of negative equity observed in the 1993 SSBF (15.7%) and still accommodate the relatively low level of default observed in the data.

⁴³Differences in manager ability could be modeled by considering a distribution $H(x, a)$, where a denotes ability. We focus on heterogeneity in risk aversion because it is central to theories of entrepreneurship. Furthermore, firms with very high and low ability will exit the SSBF sample – those with low ability will tend to close down and those with high ability will become too large to be included in the survey. See, for example, Antunes, Cavalcanti, and Villamil (2008), Cagetti and DeNardi (2006) or Meh and Terajima (2008) for models with ability heterogeneity.

7.5 Counterfactual Exercise: Empirical vs. Normal Returns

The features of return distribution $f(x)$ are important for understanding entrepreneur behavior. Figure 5 compares the empirical distribution of return on assets for incorporated firms in the 1993 SSBF to two normal distributions with different means and variances.⁴⁴ Clearly, small firms have risky, non-normal returns. The standard deviation is high, with the higher risk somewhat compensated by a higher mean, and the distribution is skewed right with high kurtosis (i.e., a long upper tail), see table 2. About 12% of firms lost more than 20% of assets invested (debt plus equity), 7.4% lost more than 40%, and 3.8% lost more than 100%. However, positive returns are even more substantial: 20.7% exceeded 50%, 10.4% exceeded 100%, and 3.8% exceeded 200%.

We conduct two counterfactual experiments to show that the return distribution is important. The experiments replace the empirical ROA distribution computed from SSBF data, keeping all other benchmark settings the same, with two different normal distributions. In figure 5 the right panel shows the “best fit” normal distribution that minimizes the maximum distance between the normal and empirical cdfs and the left panel shows the normal distribution with the same mean and variance as the empirical distribution.

Best Fit Normal Distribution. Let $g_{\mu,\sigma}$ be the density of a normal distribution with mean μ and standard deviation σ and f be the density of the SSBF distribution. We solve $\min_{\mu,\sigma} \sup_x |g_{\mu,\sigma}(x) - f(x)|$ to find a normal distribution that best approximates the empirical density function. The resulting values are $\mu = 1.193$ and $\sigma = 0.394$, shown in the right panel of figure 5. In order to fit the “middle” this normal distribution has less mass in the tails and, as a consequence, is less risky. Thus, when re-calibrating the model, median risk aversion increases from 1.55 to 2.33 but at the same time, for given ρ , the lower project risk in this normal distribution encourages entrepreneurs to run larger firms. Default is lower, again because this normal distribution has a thinner lower tail. Finally, the thinner upper tail implies that less firms will be “lucky” and have a very good realization. In order to match the distribution of net-worth invested, firms must be more leveraged: Given two solvent firms with the same realization, a more leveraged firm earns a higher return because the owner receives a higher residual after making the fixed debt payment.⁴⁵ The somewhat higher level of debt also implies that more low realizations will result in negative equity, and the predicted percentage of firms with negative equity increases from 10.6% to 13.7%.

Normal Distribution with SSBF μ, σ . The left panel of figure 5 compares the SSBF pdf with

⁴⁴We use 1993 data because it is the only SSBF data set with interest expenses, which are required to compute ROA. We consider only firms with at least \$50,000 in assets that are incorporated.

⁴⁵This also explains the higher value of b .

Table 11: Counterfactual Experiment: Normal Distributions

Parameter	Data	Empirical $f(x)$ SSBF 1993	Best Fit Normal $g(x)$ $\mu=1.193, \sigma=0.3938$	μ, σ Normal $g(x)$ $\mu=1.300, \sigma=1.193$
μ	1-3	1.55	2.33	$4.4 * 10^8$
σ	NA	.83	1.11	$7.9 * 10^8$
b%	NA	21.5	30.0	23.4
fit	NA	0.042	0.040	.045
median A%	[43.1,51.9]	48.1	54.7	38.6
default %	3.5	4.4	1.5	61.0
cons. %	3-5	3.6	4.9	3.1
neg. Eq %	15.7	10.6	13.7	64.4

a normal distribution with the same mean and standard deviation. Table 11 shows the results for this distribution are significantly at odds with the data, highlighting the importance of the return distribution. First, the fat tails lead to μ and σ with all point mass at $\underline{\rho}$ and $\bar{\rho}$, where $\bar{\rho}$ is the highest risk aversion for which we compute a solution. Generally, we can choose $\bar{\rho}$ sufficiently high that the mass above $\bar{\rho}$ is negligible; this cannot be done for this normal distribution with fat tails and $\bar{\rho}$ affects the results.⁴⁶ Second, the model predictions in the last column of table 11 are implausible.

8 Concluding Remarks

This paper assesses the quantitative effects of changes in bankruptcy rules and credit constraints on firms when agents have modest differences in their willingness to bear risk. Corporate bankruptcy insures owners against extreme personal loss, but preserves the possibility of very high future firm returns. The empirical return distribution for small U.S. firms has most mass centered around the middle (see figure 5), which is attractive to individuals with standard degrees of risk aversion, and a long upper tail. Entrepreneurs trade off the value of absorbing a current loss against the option value of maintaining the firm. We find that modest differences in risk aversion interact with policies to generate significant effects on output and welfare for some agents. The model also permits us to link firm legal status with owner risk aversion. Less risk-averse owners incorporate to protect personal assets because higher firm option value leads to lower default rates, while if more risk-averse owners run firms they tend to remain unincorporated. This seemingly paradoxical behavior occurs because placing some personal assets at risk of seizure allows more risk-averse owners to solve their “excess default” problem. In other words, remaining unincorporated permits them to

⁴⁶Upper bound $\bar{\rho}$ is needed for computation; it is impossible to compute solutions for a fine grid $[\underline{\rho}, \infty]$.

post a bond a posteriori. Of course, if the legal system is too costly, slow, corrupt, or otherwise not credible, bankruptcy will not improve outcomes.

There is a large literature which shows that default is beneficial in risky lending relationships because it introduces a contingency into (non-contingent) debt contracts. Thus, the relatively low default rates observed empirically may be puzzling. We show that although bankruptcy allows risk-averse agents to protect themselves against extremely bad outcomes, even when current realizations are poor owners may use personal assets to “bail out” their firms to avoid bankruptcy. In our model this occurs for three reasons. First, the firm has future option value. Second, we show that a firm uses many strategies to manage risk – including altering its size, capital structure (e.g., injecting equity from personal net-worth), and sometimes choosing to default. Third, the firm’s default decision and bankruptcy rule permit the firm to effectively alter the return distribution, which has an interesting empirical shape described previously.⁴⁷

Our goal was to highlight the importance of differences in risk aversion for entrepreneurship, but a number of extensions to our model are possible. In particular, important work by Paulson and Townsend (2006) distinguishes limited liability from moral hazard. In our model the lender can infer agents’ risk aversion (e.g., from their loan request), thus adverse selection and moral hazard do not occur. If the coefficient of risk aversion were private information, two types of mis-reports might occur: more risk averse agents could pretend to be less risk averse and vice versa. Our agents would never have an incentive to pretend they are less risk averse because they would pay a higher interest rate in exchange for a larger line of credit, which they do not need (see table 13). They also would not have an incentive to pretend they are more risk averse because they would get a slightly lower interest rate but a significantly smaller loan – table 5 shows that loan size $(1 - \epsilon)A$ goes down as ρ rises and table 13 shows that interest rate $\bar{v}/(1 - \epsilon)$ does not change significantly. Paulson and Townsend (2006) show that an information friction and a choice between entrepreneurship and wage work creates an important role for moral hazard. In future work we plan to extend our model to quantify the effects of Paulson and Townsend’s important insight in our framework.

Our model currently uses a composite lender to aggregate the many sources from which firms obtain loans – banks, trade credit associations, leasing companies, and credit cards. In future work, it would be useful to model the problems of these different lenders. For example, it would be instructive to consider the problem of a bank that must attract deposits and make loans, subject to default risk and regulation. Similarly, trade credit and leasing are important when lenders face information and enforcement problems, as is the case for small firms (e.g., see Eisfeldt and Rampini

⁴⁷Lowering the default rate to zero is not the desideratum. For example, the default rate is zero when no lending occurs, but this is not a desirable outcome.

(2008)). Also, general equilibrium effects are important in credit markets. Increased loan demand will raise the cost of external finance, which will offset some of the welfare gains. Finally, we focus on idiosyncratic firm risk, which is particularly interesting in this setting, because firms are not tradable, and hence the owner cannot diversify this risk. Nonetheless, aggregate risk and correlated shocks would be interesting extensions to further explore macroeconomic implications of the model.

9 Appendix A: Experiments

Table 12 shows that the model is roughly stable when T changes. As T increases, μ remains between 1.5 and 1.6 and σ between 0.74 and 0.9. Liquidity constraint b decreases somewhat because the penalty increases with T ; entrepreneurs become more cautious and run smaller firms (lower A) and to achieve the best model fit, the optimization procedure lowers b to ensure they use enough personal funds. Default decreases with T because it is more costly to the entrepreneur. Consumption and negative equity are stable. Table 13 shows that the loan rate decreases as T increases given ρ .

Table 12 Benchmark Exogenous Variables: $r_f = 1.2\%$, $r = 4.5\%$, $\beta = 0.97$, $\delta = 0.10$

T	10	11	12	13	14	15	16	20
μ	1.62	1.55	1.49	1.51	1.52	1.52	1.51	1.50
σ	0.90	0.83	0.75	0.74	0.76	0.76	0.76	0.78
b %	20.6	21.5	22.0	19.8	18.4	17.7	17.3	15.4
fit	0.046	0.042	0.037	0.034	0.034	0.034	0.035	0.036
median A %	46.9	48.1	49.2	47.0	45.3	44.3	43.8	41.3
default %	4.7	4.4	4.2	3.8	3.5	3.3	3.1	2.5
cons. %	3.7	3.6	3.6	3.6	3.6	3.6	3.6	3.5
neg Eq. %	10.2	10.6	10.8	10.5	10.8	11.1	11.6	11.1

Table 13 Loan Interest Rate as T Varies

risk aversion ρ	0.9	1.2	1.5	1.8	2.1	2.5	3.0	3.5	4.0
$T = 0$	19.6	17.7	17.4	18.1	19.4	21.6	24.4	27.2	29.9
$T = 6$	18.0	15.3	14.2	14.0	14.3	14.4	14.3	14.1	14.1
$T = 8$	17.3	14.5	13.3	13.0	13.3	13.3	13.2	13.1	13.0
$T = 10$	16.6	13.7	12.4	12.1	12.3	12.4	12.2	12.0	11.9
$T = 11$	16.3	13.3	12.0	11.6	11.9	11.9	11.6	11.5	11.4
$T = 12$	16.0	12.9	11.7	11.2	11.4	11.4	11.2	11.0	10.9
$T = 14$	15.3	12.3	10.9	10.5	10.6	10.5	10.3	10.2	10.1
$T = 16$	14.7	11.8	10.4	9.8	9.8	9.8	9.6	9.5	9.4
$T = 20$	13.6	10.7	9.3	8.7	8.5	8.8	8.6	8.5	8.4

Table 14, 15 and 16 show the results are unaffected by substantial changes in bankruptcy cost δ . Compared to the $\delta = 0.1$ benchmark in table 12, table 14 triples δ and re-estimates the model: μ , σ , b are virtually unaffected, thus the model is robust and detailed cost measurement is not essential in this range. Table 15 reports comparative static results in which δ varies between 0 and 100%, fixing b , μ , σ at the benchmark values (i.e., the model is not re-estimated). Again, δ has almost no impact on endogenous variables – in contrast to the comparative statics with respect to T . Table 16 shows that δ has a minor effect on welfare (at the median level of risk aversion the gains/losses are less than 0.1%) because (a) bankruptcy occurs with only a small probability, and (b) assets Ax in bankruptcy states tend to be small so deadweight loss δAx is small. Clearly, the expected costs, i.e., the product of (a) and (b) is second order.

Table 14 Higher Cost δ : $r_f = 1.2\%$, $r = 4.5\%$, $\beta = 0.97$, $\delta = 0.30$

T	10	11	12	13	14	15	16	20
μ	1.79	1.67	1.55	1.50	1.52	1.52	1.51	1.50
σ	1.08	0.95	0.81	0.74	0.76	0.76	0.76	0.78
b %	14.9	16.9	19.8	20.1	18.4	17.6	17.2	15.4
fit	0.052	0.046	0.040	0.035	0.034	0.034	0.035	0.036
median A %	39.8	42.6	46.3	47.3	45.3	44.3	43.6	41.3
default %	4.0	4.0	4.0	3.8	3.5	3.2	3.1	2.5
cons. %	3.8	3.7	3.7	3.6	3.6	3.6	3.6	3.5
neg Eq. %	8.7	9.2	10.2	10.5	10.7	11.0	11.4	11.1

Table 15 Comparative Statics for δ : Fix $r_f = 1.2\%$, $r = 4.5\%$, $\beta = 0.97$, $\delta = 0.10$

δ	0.00	0.10	0.20	0.30	0.40	0.50	0.60	0.80	1.00
fit	0.042	0.042	0.046	0.050	0.054	0.057	0.060	0.063	0.065
median A %	48.3	48.1	48.0	47.9	47.8	47.8	47.7	47.6	47.5
default %	4.5	4.4	4.4	4.4	4.3	4.3	4.3	4.2	4.2
cons. %	3.6	3.6	3.6	3.6	3.6	3.6	3.6	3.6	3.6
neg Eq. %	10.8	10.6	10.3	10.2	10.1	10.1	10.0	9.9	9.7

Table 16 Welfare Effect as δ Varies: % increase or decrease of net-worth compared to benchmark

risk aversion ρ	0.9	1.2	1.5	1.8	2.1	2.5	3.0	3.5	4.0
$\delta = 0.00$	0.0	0.0	0.0	0.0	0.1	0.1	0.1	0.0	0.0
$\delta = 0.10$	—	—	—	—	—	—	—	—	—
$\delta = 0.20$	0.0	0.0	0.0	0.0	-0.1	-0.1	0.0	0.0	0.0
$\delta = 0.40$	0.0	0.0	0.0	0.0	-0.2	-0.2	-0.1	-0.1	-0.1
$\delta = 0.60$	0.0	0.0	0.0	-0.1	-0.4	-0.3	-0.2	-0.1	-0.1
$\delta = 0.80$	0.0	0.0	0.0	-0.2	-0.5	-0.3	-0.2	-0.2	-0.1
$\delta = 1.00$	0.0	0.0	0.0	-0.2	-0.5	-0.4	-0.3	-0.2	-0.1

The remaining tables show the effects of slight optimism.

Table 17 5% Optimism: $r_f = 1.2\%$, $r = 4.5\%$, $\beta = 0.97$, $\delta = 0.10$, optimism=5%

T	10	11	12	13	14	15	16	20
μ	1.69	1.65	1.61	1.58	1.55	1.52	1.50	1.48
σ	0.75	0.71	0.68	0.66	0.64	0.63	0.62	0.62
b %	26.4	26.2	26.3	26.7	27.0	27.3	27.2	24.4
fit	0.032	0.030	0.029	0.028	0.028	0.028	0.028	0.029
median A %	55.1	54.9	54.8	54.7	54.7	54.7	54.5	51.5
default %	4.7	4.4	4.1	3.9	3.7	3.6	3.4	2.7
cons. %	4.4	4.4	4.3	4.3	4.2	4.2	4.1	4.0
neg Eq. %	12.6	13.4	14.5	15.9	17.1	17.7	17.8	16.2

Table 18 10% Optimism: $r_f = 1.2\%$, $r = 4.5\%$, $\beta = 0.97$, $\delta = 0.10$, optimism=10%

T	10	11	12	13	14	15	16	20
μ	1.92	1.89	1.83	1.79	1.76	1.73	1.70	1.61
σ	0.83	0.81	0.77	0.74	0.72	0.70	0.69	0.63
b %	26.6	26.2	27.0	27.2	27.3	27.3	27.3	27.4
fit	0.030	0.030	0.029	0.029	0.029	0.029	0.029	0.028
median A %	54.9	54.1	54.8	54.8	54.8	54.8	54.8	54.7
default %	4.4	4.0	3.8	3.6	3.4	3.3	3.1	2.7
cons. %	5.2	5.1	5.1	5.0	5.0	4.9	4.9	4.7
neg Eq. %	15.8	16.7	17.5	17.8	17.8	17.8	17.7	17.6

Appendix B: Proofs

Proof of Proposition 1. First, substitute $V_S(w) = w^{1-\rho}v_S$ and $V_B(w) = w^{1-\rho}v_B$ into the right-hand side of the objective of problem 1 and in constraint 2. Thus, we get

$$V_S(w) = \max_{c,A,\epsilon,\bar{v}} u(c) + \beta \left[\int_{\mathfrak{B}} ((1+r)(w - \epsilon A - c))^{1-\rho} v_B dF(x) + \int_{\mathfrak{B}^c} (A(x - \bar{v}) + (1+r)(w - \epsilon A - c))^{1-\rho} v_S dF(x) \right];$$

Subject to:

$$\int_{\mathfrak{B}} (1 - \delta)x dF(x) + \int_{\mathfrak{B}^c} \bar{v} dF(x) \geq (1 - \epsilon)(1 + r_f) \quad (18)$$

$$x \in \mathfrak{B} \iff v_B \left((1+r)(w - \epsilon A - c) \right)^{1-\rho} > v_S \left(A(x - \bar{v}) + (1+r)(w - \epsilon A - c) \right)^{1-\rho} \quad (19)$$

$$(1 - \epsilon)A \leq bw \quad (20)$$

$$c, A \geq 0, \quad 0 \leq \epsilon \leq 1. \quad (21)$$

Let $\lambda > 0$ and let current wealth be w . We must prove that $V_S(\lambda w) = \lambda^{1-\rho}w$.

Suppose that the entrepreneur's wealth is λw and consumption is changed to λc , the firm's assets to λA , while ϵ remains unchanged. Then

$$\begin{aligned} \lambda^{1-\rho}v_B \left((1+r)(w - \epsilon A - c) \right)^{1-\rho} &= v_B \left((1+r)(\lambda w - \epsilon \lambda A - \lambda c) \right)^{1-\rho}, \text{ and} \\ \lambda^{1-\rho}v_S \left(A(x - \bar{v}) + (1+r)(w - \epsilon A - c) \right)^{1-\rho} &= v_S \left(\lambda A(x - \bar{v}) + (1+r)(\lambda w - \epsilon \lambda A - \lambda c) \right)^{1-\rho}. \end{aligned}$$

This and (19) imply that bankruptcy set \mathfrak{B} remains unchanged. Thus, (18), (20) and (21) are satisfied. Next, note that the right-hand side of the objective changes by the factor $\lambda^{1-\rho}$. Because $V_S(\lambda w)$ is the maximum utility of the entrepreneur given wealth λw , it follows that

$$V_S(\lambda w) \geq \lambda^{1-\rho}V_S(w), \quad (22)$$

for all $\lambda > 0$. Thus,

$$V_S(w) = V_S \left(\frac{1}{\lambda} \lambda w \right) \geq \frac{1}{\lambda^{1-\rho}} V_S(\lambda w),$$

which implies that (22) holds with equality. Substituting $w = 1$ and $\lambda = w$ in (22) immediately implies that $V_S(w) = w^{1-\rho}v_S$. The proof that $V_B(w) = w^{1-\rho}v_B$ is similar. ■

Lemma 1 *Constraint 1 of Problem 1 binds.*

Proof of Lemma 1. Immediate: Suppose by way of contradiction that constraint (1) is slack. Then \bar{v} can be lowered thereby increasing $w'_s(x)$, which increases the objective of problem 1.⁴⁸ ■

Lemma 2 *Suppose that \mathfrak{B} is non-empty. Let*

$$x^* = \bar{v} - \left[1 - \left(\frac{v_B}{v_S} \right)^{\frac{1}{1-\rho}} \right] \frac{(1+r)(1-\epsilon A - c)}{A} \quad (23)$$

Then $\mathfrak{B} = \{x | \underline{x} \leq x < x^\}$. Conversely, if $x^* > \underline{x}$, then bankruptcy set \mathfrak{B} is non-empty.⁴⁹*

Proof of Lemma 2. If the entrepreneur chooses to default, the entrepreneur's utility is

$$u^B(x) = \left[\eta Ax + (1+r)(1-\epsilon A - c) \right]^{1-\rho} v_B. \quad (24)$$

Otherwise, if the entrepreneur does not default, then the utility is

$$u^S(x) = \left[A(x - \bar{v}) + (1+r)(1-\epsilon A - c) \right]^{1-\rho} v_S. \quad (25)$$

Note that $x \in \mathfrak{B}$ if $u^B(x) > u^S(x)$ and $x \notin \mathfrak{B}$ if $u^S(x) \geq u^B(x)$.

Suppose that $u^S(x) \geq u^B(x)$. We show that $u^S(x') > u^B(x')$ for all $x' > x$. Note that

$$\frac{d(u^S(x) - u^B(x))}{dx} = \frac{(1-\rho)(1-\eta)Av_S}{\left[\eta Ax + (1+r)(1-\epsilon A - c) \right]^\rho v_B} > 0$$

Thus, $u^S(x) - u^B(x) \geq 0$ implies that $u^S(x') > u^B(x')$ for all $x' > x$. Similarly, $u^B(x) > u^S(x)$ implies $u^B(x') > u^S(x')$ for all $x' < x$. Let x^* solve $u^B(x^*) = u^S(x^*)$. Then the bankruptcy set is given by $\mathfrak{B} = \{x | \underline{x} \leq x < x^*\}$. (24) and (25) imply

$$\left[\eta Ax^* + (1+r)(1-\epsilon A - c) \right] \left(\frac{v_B}{1-\rho} \right)^{1-\rho} = \left[A(x^* - \bar{v}) + (1+r)(1-\epsilon A - c) \right] \left(\frac{v_S}{1-\rho} \right)^{1-\rho},$$

which implies (23).

Now suppose that x^* is given by (23) and $x^* > \underline{x}$. Then by construction, $u^S(x^*) = u^B(x^*)$. Further, the monotonicity result established above implies $u^B(x) > u^S(x)$ for all $x < x^*$ and $u^S(x) \leq u^B(x)$ for all $x \geq x^*$. Thus, the bankruptcy set is given by $\mathfrak{B} = \{x | \underline{x} \leq x < x^*\}$. ■

⁴⁸The direct effect is to increase the entrepreneur's payoff by decreasing required payments to the lender and the indirect effect is to lower the bankruptcy probability.

⁴⁹At realization x^* , the entrepreneur is indifferent between default and continuing to operate the firm. Thus, (2) must hold with equality. Solving (2) for x^* implies (23).

Proof of Proposition 2. Let $\Gamma(v_S)$ be the maximum entrepreneur utility in Problem 3. We must prove there exists v_S^* such that $\Gamma(v_S^*) = v_S^*$. First let $\rho > 1$. Suppose that $v_S = 0$. Then $v_B < 0$. As a consequence, $\Gamma(0) < 0$. Now let \hat{v}_S be the entrepreneur's expected utility from autarky.

$$\hat{v}_S = \max_{c_0, c_1, \dots} \sum_{t=0}^{\infty} \beta^t u(c_t)$$

Subject to:

$$\sum_{t=0}^{\infty} \frac{c_t}{(1+r)^t} \leq w \text{ and } c_0, c_1, \dots \geq 0,$$

Note that if $v_S = \hat{v}_S$ and we choose $A = 0$ in problem 3 then we get the autarky utility \hat{v}_S . Thus, optimization implies that $\Gamma(\hat{v}_S) \geq \hat{v}_S$. Since Γ is continuous, the intermediate value theorem implies that there exists a fixed point v_S^* .

For $\rho \leq 1$ we re-normalize $u_\rho(x) = (x^{1-\rho} - 1)/(1 - \rho)$. Then $\lim_{\rho \rightarrow 1} u_\rho(x) = \ln(x)$. Suppose that $v_S = 0$ and that $u(x) = \ln(x)$. We show that $\Gamma(v_S) < 0$.

Let $w_0 = 1 - \epsilon A$ be the amount of net-worth not invested in the firm. Because the continuation payoff from non-default is zero we get

$$\Gamma(0) = \max_{c_0, c_1, \dots, c_T} \sum_{t=0}^T \beta^t \ln(c_t) \quad (26)$$

Subject to:

$$\sum_{t=0}^{\infty} \frac{c_t}{(1+r)^t} \leq w_0$$

Furthermore, it is sufficient to prove that the objective of (26) is negative for $w_0 = 1$, because the objective is increasing in w_0 .

The first order conditions immediately reveal that

$$c_t = (1+r)^t \beta^t c_0, \quad c_0 = \frac{1-\beta}{1-\beta^{T+1}}. \quad (27)$$

Substituting (27) into the objective of (26) yields

$$\sum_{t=0}^T \beta^t \ln((1+r)^t \beta^t) + \sum_{t=0}^T \beta^t \ln(c_0). \quad (28)$$

If $\beta(1+r) \leq 1$ then (28) is strictly less than 0. Thus, there exists $\bar{r}(\beta)$ with $(1 + \bar{r}(\beta))\beta > 1$ such that $\Gamma(0) < 0$ for all $r \leq \bar{r}(\beta)$. By continuity there exists $\underline{\rho} < 1$ such that $\Gamma(0) < 0$ for $\rho \geq \underline{\rho}$. Finally, $\Gamma(\hat{v}_S) \geq \hat{v}_S$ for the autarky level of utility \hat{v}_S . Thus, continuity of Γ implies the existence of a fixed point v_S^* . ■

Appendix C: Match Criterion

We compare criterion (17) to the alternative square distance criterion.

Table 19 Supremum Norm: $r_f = 1.2\%$, $r = 4.5\%$, $\beta = 0.97$, $\delta = 0.10$, optimism=0.0%

T	10	11	12	13	14	15	16	20
μ	1.62	1.55	1.49	1.51	1.52	1.52	1.51	1.50
σ	0.90	0.83	0.75	0.74	0.76	0.76	0.76	0.78
b %	20.6	21.5	22.0	19.8	18.4	17.7	17.3	15.4
fit	0.046	0.042	0.037	0.034	0.034	0.034	0.035	0.036
median A %	46.9	48.1	49.2	47.0	45.3	44.3	43.8	41.3
default %	4.7	4.4	4.2	3.8	3.5	3.3	3.1	2.5
cons. %	3.7	3.6	3.6	3.6	3.6	3.6	3.6	3.5
neg Eq. %	10.2	10.6	10.8	10.5	10.8	11.1	11.6	11.1

Table 20 Square Norm: $r_f = 1.2\%$, $r = 4.5\%$, $\beta = 0.97$, $\delta = 0.10$, optimism=0.0%

T	10	11	12	13	14	15	16	20
μ	1.53	1.49	1.47	1.46	1.44	1.41	1.42	1.41
σ	0.74	0.70	0.70	0.69	0.67	0.65	0.67	0.69
b %	21.4	21.8	20.9	20.3	20.3	20.7	19.3	17.3
fit	0.020	0.019	0.019	0.019	0.019	0.019	0.019	0.020
median A %	50.2	50.8	49.6	49.0	48.9	49.3	47.4	44.7
default %	4.7	4.4	4.0	3.8	3.6	3.4	3.2	2.6
cons. %	3.7	3.7	3.6	3.6	3.6	3.5	3.5	3.5
neg Eq. %	9.8	10.2	10.1	10.3	10.9	11.7	11.8	11.5

10 Appendix D

10.1 Construction of the Distribution of Firm Returns

Herranz, Krasa, and Villamil (2009) use the 1993 SSBF to compute the return on assets (ROA) because it includes interest payments. They exclude unincorporated firms because the SSBF data do not account for the entrepreneur's wage from running the firm. The firm's nominal after-tax ROA is:

$$x = \frac{\text{Profit after taxes} + \text{Interest Paid}}{\text{Assets}} + 1. \quad (29)$$

Interest paid is added to after tax profit because the ROA must include payments to both debt and equity holders.⁵⁰ The nominal rate is adjusted by 3% for inflation (BLS CPI 1993). ROA is computed instead of return on equity because many firms had negative equity (about 16% in the 1993 SSBF and 21% in 1998). Many of these firms stay in business because owners use personal funds to “bail out the firm.” Computing a ROA and modeling owners’ allocations of equity and debt accounts for this.⁵¹

10.2 Numerical Procedure

Given model parameters, compute solutions to problem 3 as follows. For fixed v_S , use the first order conditions to solve for the optimum. (9) is always slack, since $c + \epsilon A = 1$ would imply zero future consumption. We need only verify if (10) and (or) (11) bind by checking for positive Lagrange multipliers in the first order conditions. Inserting the solution of the first order conditions into the objective yields $\Gamma(v_S)$. To find a fixed point, compute slope $\Gamma'(v_S)$ by the Envelope Theorem or compute the difference of Γ between v_S and a point v'_S , giving solution ϵ, A, c, \bar{v} . Section 3.2 explains how to go from these point estimates to cdfs. Compute $\underline{\rho}$ from the first order condition using the fact that $v_S \rightarrow \infty$ as $\rho \downarrow \underline{\rho}$.⁵²

Appendix E: Limited Liability

Suppose that entrepreneur can be forced to pay a percentage γ of private assets in the case of default. This yields the following optimization problem for an individual entrepreneur.

$$\begin{aligned} \textbf{Problem 4} \quad V_S(w) = \max_{c,A,\epsilon,\bar{v}} & u(c) + \beta \left[\int_{\mathfrak{B}} V_{B,1}((1-\gamma)(1+r)(w-\epsilon A-c)) dF(x) \right. \\ & \left. + \int_{\mathfrak{B}^c} V_S(A(x-\bar{v}) + (1+r)(w-\epsilon A-c)) dF(x) \right] \end{aligned}$$

Subject to:

$$\begin{aligned} & \int_{\mathfrak{B} \cap \mathbb{R}_-} x dF(x) + \int_{\mathfrak{B} \cap \mathbb{R}_+} (1-\delta)x dF(x) \\ & + \int_{\mathfrak{B}} \gamma(1-\delta) \left(\frac{w}{A} - \epsilon - \frac{c}{A} \right) dF(x) + \int_{\mathfrak{B}^c} \bar{v} dF(x) \geq (1-\epsilon)(1+r_f) \end{aligned} \quad (30)$$

$$x \in \mathfrak{B} \text{ if and only if } V_{B,1}((1-\gamma)(1+r)(w-\epsilon A-c)) > V_S(A(x-\bar{v}) + (1+r)(w-\epsilon A-c)) \quad (31)$$

⁵⁰We use after tax returns as this is relevant for an entrepreneur to decide how much net-equity to invest.

⁵¹Computing ROE is misleading for firms near distress. For firms with low but positive equity, small profit gives a high percentage return. Also, many loans are collateralized; book value of equity understates owner contribution (the “correct” value of equity).

⁵²Choose a large value for v_S , solve for the remaining parameters including ρ , which approximates $\underline{\rho}$. In other words, rather than solving the fixed point problem for v_S , solve it for ρ .

$$(1 - \epsilon)A \leq bw \quad (32)$$

$$c \geq 0, A \geq 0, 0 \leq \epsilon \leq 1. \quad (33)$$

Note that the investor's constraint is normalized by assets. Thus, the payment in bankruptcy states made out of the entrepreneur's personal assets must be divided by A .

Again, suppose that the entrepreneur's wealth is λw and consumption is changed to λc , the firm's assets to λA , while ϵ remains unchanged. Then as in the proof of Lemma 1 we can show that the constraints of Problem 4 are satisfied and that $V_S(\lambda w) = \lambda^{1-\rho} V_S(w)$. Similarly, it follows again that $V_B(\lambda w) = \lambda^{1-\rho} V_B(w)$. Thus, we get an optimization problem that is analogous to Problem 3.

$$\begin{aligned} \textbf{Problem 5} \quad v_S = \max_{c,A,\epsilon,\bar{v}} & u(c) + \beta v_B \int_{\underline{x}}^{x^*} \left[(1+r)(1-\gamma)(1-\epsilon A - c) \right]^{1-\rho} dF(x) \\ & + \beta v_S \int_{x^*}^{\bar{x}} \left[A(x - \bar{v}) + (1+r)(1-\epsilon A - c) \right]^{1-\rho} dF(x) \end{aligned}$$

Subject to:

$$\int_{\underline{x}}^{x^*} \min\{x, (1-\delta)x\} dF(x) + \int_{x^*}^{\bar{x}} \gamma(1-\delta) \left(\frac{1}{A} - \epsilon - \frac{c}{A} \right) dF(x) + \int_{x^*}^{\bar{x}} \bar{v} dF(x) \geq (1-\epsilon)(1+r_f) \quad (34)$$

$$x^* = \max \left\{ \bar{v} - \left[1 - (1-\gamma) \left(\frac{v_B}{v_S} \right)^{\frac{1}{1-\rho}} \right] \frac{(1+r)(1-\epsilon A - c)}{A}, \underline{x} \right\} \quad (35)$$

$$c + \epsilon A \leq 1 \quad (36)$$

$$(1 - \epsilon)A \leq b \quad (37)$$

$$c \geq 0, A \geq 0, 0 \leq \epsilon \leq 1. \quad (38)$$

Note that for $\gamma = 0$ this problem is equivalent to Problem 3.

References

- Abbring, J. and J. Campbell (2005). A firm's first year. Tinbergen Institute working paper 05-046.
- Antunes, A., T. Cavalcanti, and A. Villamil (2008). The effect of financial repression and enforcement on entrepreneurship and economic development. *Journal of Monetary Economics* 55, 278–297.
- Athreya, K. (2002). Welfare implications of the bankruptcy reform act of 1999. *Journal of Monetary Economics* 49, 1567–1595.
- Boissay, F. and R. Gropp (2007). Trade credit defaults and liquidity provision by firms. Working Paper No. 753, European Central Bank.
- Boyd, J. and B. Smith (1994). How good are standard debt contracts? Stochastic versus non stochastic monitoring in a costly state verification environment. *Journal of Business* 67, 539–561.
- Bris, A., I. Welch, and N. Zhu (2006). The cost of bankruptcy: Chapter 7 liquidation versus chapter 11 reorganization. *Journal of Finance* 111, 1253–1303.
- Cagetti, M. and M. DeNardi (2006). Entrepreneurship, frictions, and wealth. *Journal of Political Economy* 114, 835–870.
- Chatterjee, S., D. Corbae, M. Nakajima, and V. Rios-Rull (2007). A quantitative theory of unsecured consumer credit with risk of default. *Econometrica* 75, 1525–1589.
- Eisfeldt, A. and A. Rampini (2008). Leasing, ability to repossess, and debt capacity. *Review of Financial Studies* 21, 289–309.
- Evans, D. S. and B. Jovanovic (1989). An estimated model of entrepreneurial choice under liquidity constraints. *Journal of Political Economy* 97, 808–827.
- Glennon, D. and P. Nigro (2005). Measuring the default risk of small business loans: A survival analysis approach. *Journal of Money Credit and Banking* 37, 923–947.
- Herranz, N., S. Krasa, and A. Villamil (2009). Small firms in the ssbf. pp. xx–xx. *Annals of Finance*.
- Hopenhayn, H. and G. Vereshchagina (2008). Risk taking by entrepreneurs. pp. xx–xx. *American Economic Review*.
- Hovenkamp, H. (1991). *Enterprise and American Law*. Cambridge, MA: Harvard University Press.

- Kehoe, T. and D. Levine (1993). Debt-constrained asset markets. *Review of Economic Studies* 60, 865–888.
- Kihlstrom, R. and J. Laffont (1979). A general equilibrium entrepreneurial theory of firm formation based on risk aversion. *Journal of Political Economy* 87, 719–749.
- Knight, F. H. (1921). *Risk, Uncertainty and Profit*. Boston, MA: Hart, Schaffner & Marx; Houghton Mifflin.
- Krasa, S., T. Sharma, and A. Villamil (2008). Bankruptcy and firm finance. *Economic Theory* 3, 595–609.
- Krasa, S. and A. Villamil (2000). Optimal contracts when enforcement is a decision variable. *Econometrica* 68, 119–134.
- Krasa, S. and A. Villamil (2003). Optimal contracts when enforcement is a decision variable: A reply. *Econometrica* 71, 391–393.
- Krusell, P. and A. Smith (1998). Income and wealth heterogeneity in the macroeconomy. *Journal of Political Economy* 106, 867–896.
- Livshits, I., J. MacGee, and M. Tertilt (2007). Consumer bankruptcy: A fresh start. *American Economic Review* 97, 402–418.
- Mann, B. (2003). *Republic of Debtors: Bankruptcy in the Age of American Independence*. Cambridge, MA: Harvard University Press.
- Mazzocco, M. (2006). Individual rather than household euler equations: Identification and estimation of individual preferences using household data. <http://www.ccpr.ucla.edu/asp/Mrsch.asp>.
- Meh, C. and Y. Terajima (2008). Unsecured debt, consumer bankruptcy and entrepreneurship. working paper, Bank of Canada.
- Mester, L. (1997). What's the point of credit scoring? *Business Review* 3, 3–16.
- Paulson, A. and R. Townsend (2006). Distinguishing limited liability from moral hazard in a model of entrepreneurship. *Journal of Political Economy* 114, 100–145.
- Prescott, E. C. (2006). The transformation of macro policy and research. *Journal of Political Economy* 114, 203–236.
- Quadrini, V. (2009). Entrepreneurship in macroeconomics. *Annals of Finance*, x–x.